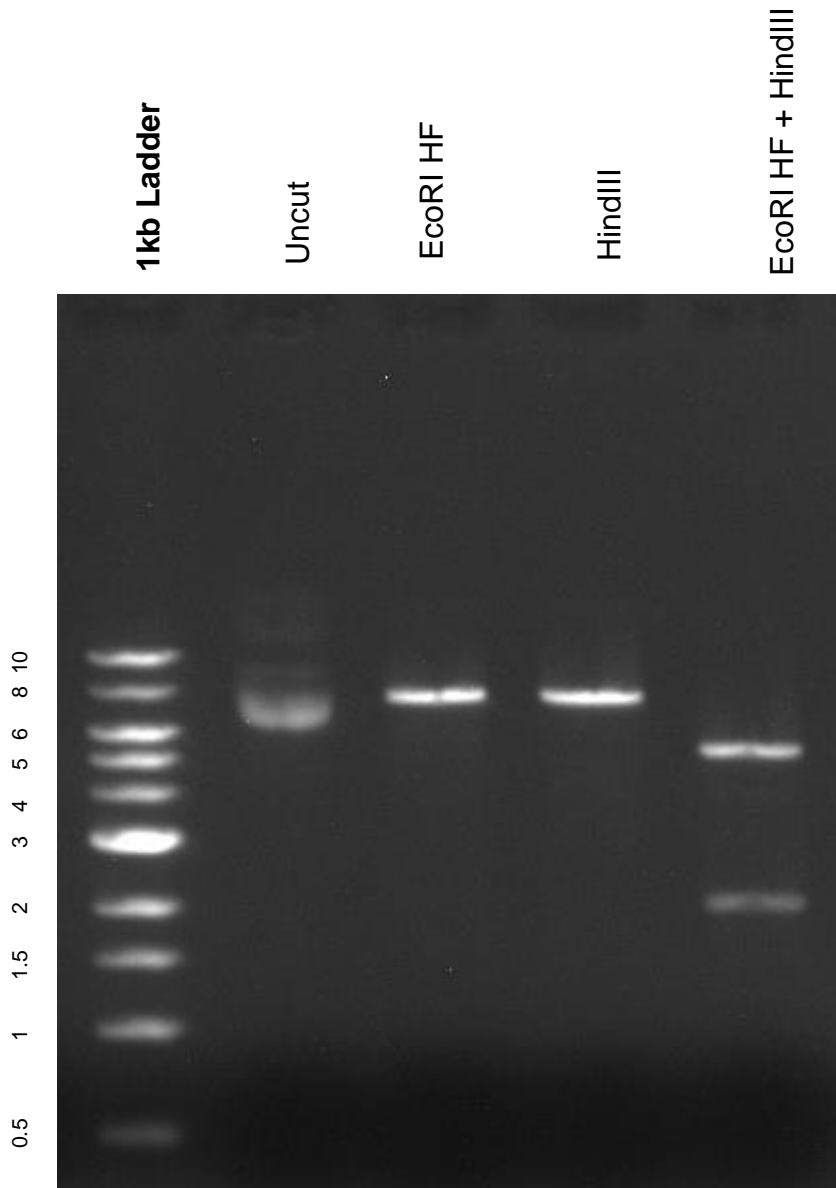


This gel depicts the NEB 1kb ladder and a digestion of the plasmid GFP-V96 ELP with the following enzymes: EcoRI HF, HindIII, EcoRI HF + HindIII

Plasmid 67853:
GFP-V96 ELP



DNA digested with EcoRI HF, HindIII single digests and EcoRI HF + HindIII double digest for **2 hours**

Gel: .8% TAE stained with 150 ml 1X TAE and 3uL of ethidium bromide

Ran for 30 minutes at 150 volts