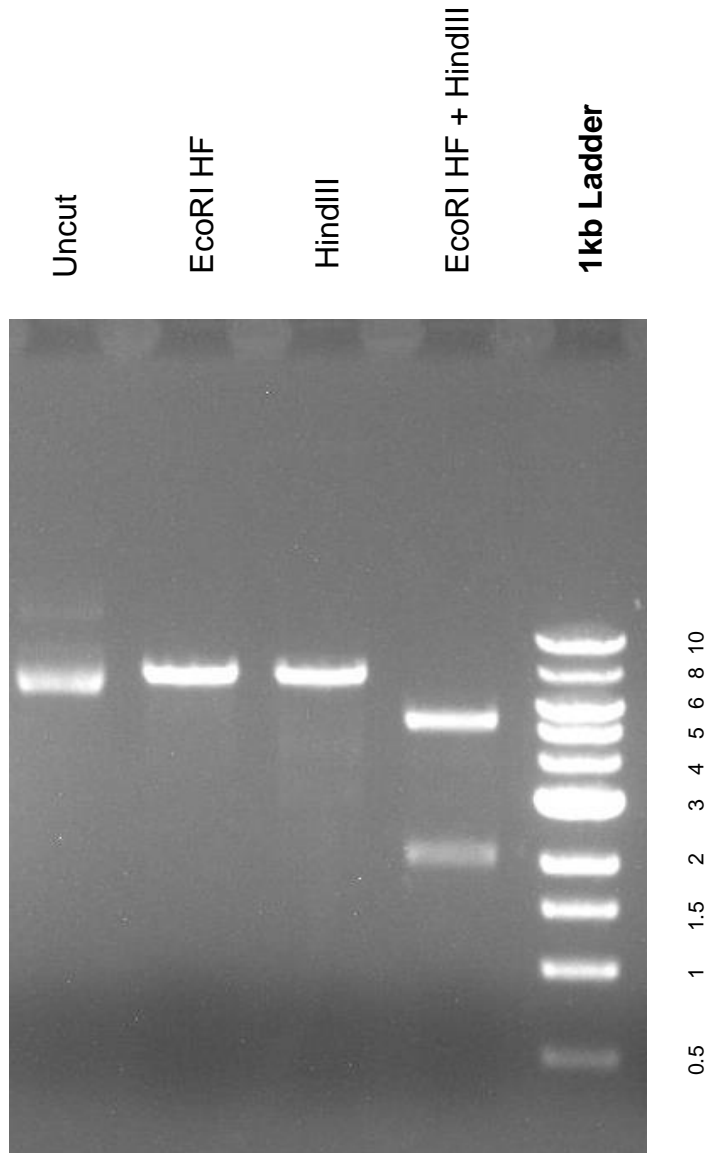


This gel depicts the NEB 1kb ladder and a digestion of the plasmid GFP-A96 ELP with the following enzymes: EcoRI HF, HindIII, EcoRI HF + HindIII

Plasmid 67856:
GFP-A96 ELP



DNA digested with EcoRI HF, HindIII single digests and EcoRI HF + HindIII double digest for **2 hours**

Gel: .8% TAE stained with 150 ml 1X TAE and 3uL of ethidium bromide

Ran for 1 hour at 100 volts