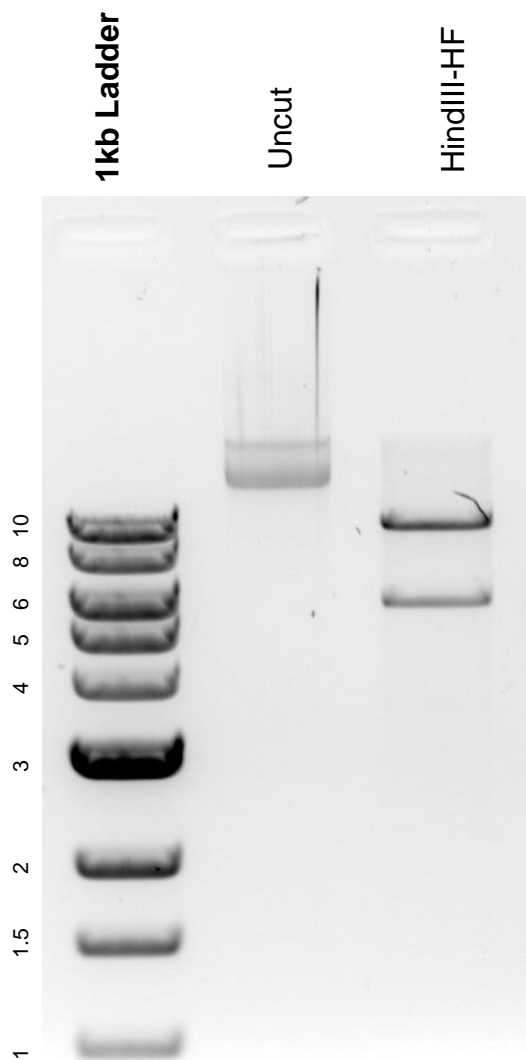


This gel depicts the NEB 1kb ladder and a digestion of the plasmid pMpGWB124 with the following enzyme: HindIII-HF.

Plasmid 68578:
pMpGWB124



DNA digested with HindIII-HF single digest for **2 hours**.
Gel: 0.8% agarose stained with 5 uL of ethidium bromide.
Ran for 2.5 hours at 60 volts.