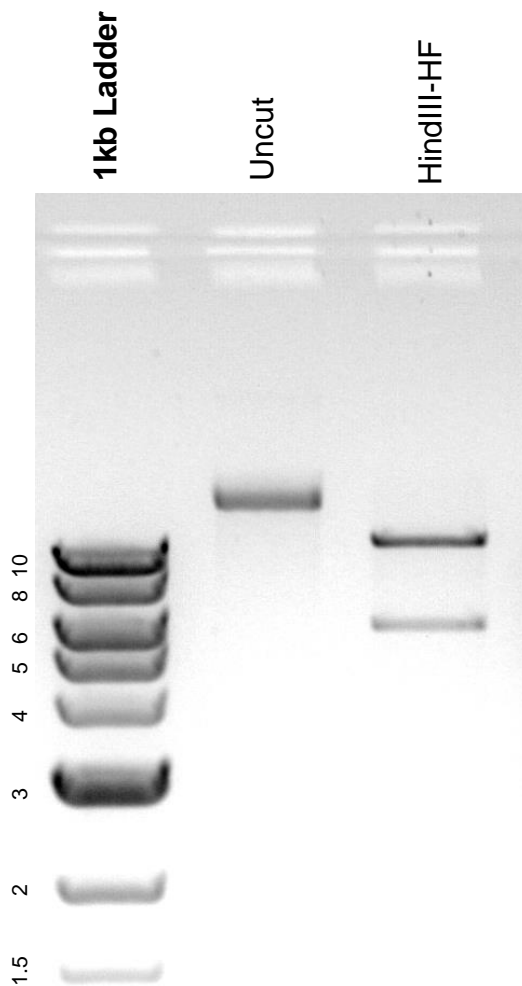


This gel depicts the NEB 1kb ladder and a digestion of the plasmid pMpGWB324 with the following enzymes: HindIII-HF.

Plasmid 68652:
pMpGWB324



DNA digested with HindIII-HF single digest for **2 hours**.
Gel: 0.8% agarose stained with 5 uL of ethidium bromide.
Ran for 2.5 hours at 60 volts.