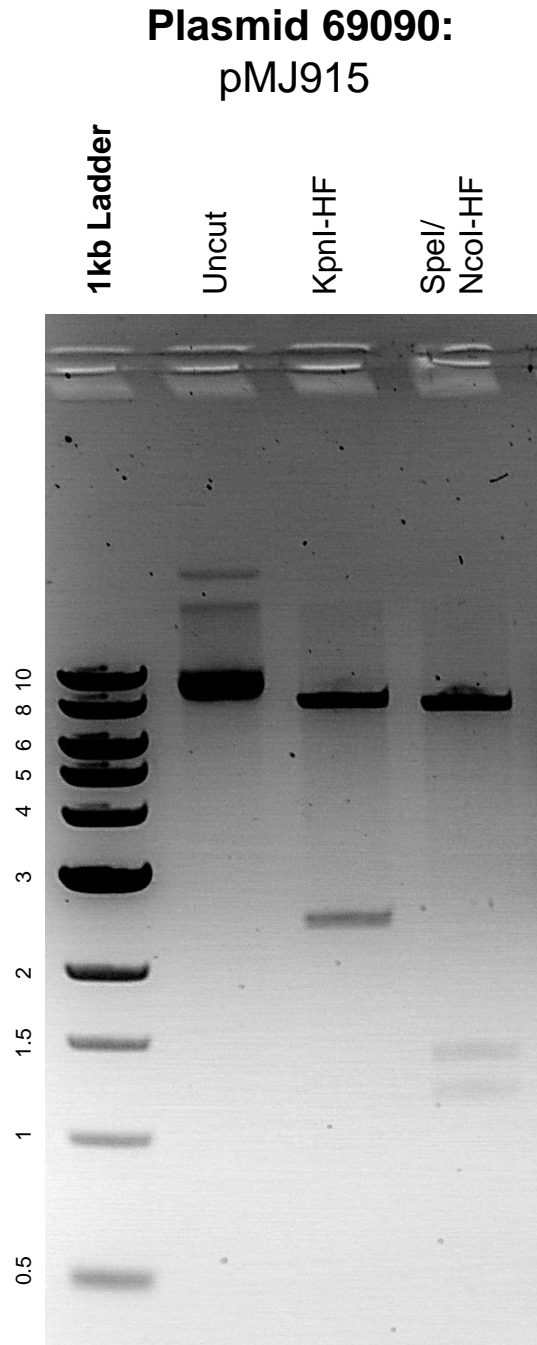


This gel depicts the NEB 1kb ladder and a digestion of the plasmid pMJ915 with the following enzymes: KpnI-HF, SpeI, and NcoI-HF.



DNA digested with KpnI-HF single digest and SpeI/NcoI-HF double digest for **2 hours**.
Gel: 0.8% agarose stained with 5 μ L of ethidium bromide.
Ran for 2 hours at 80 volts.