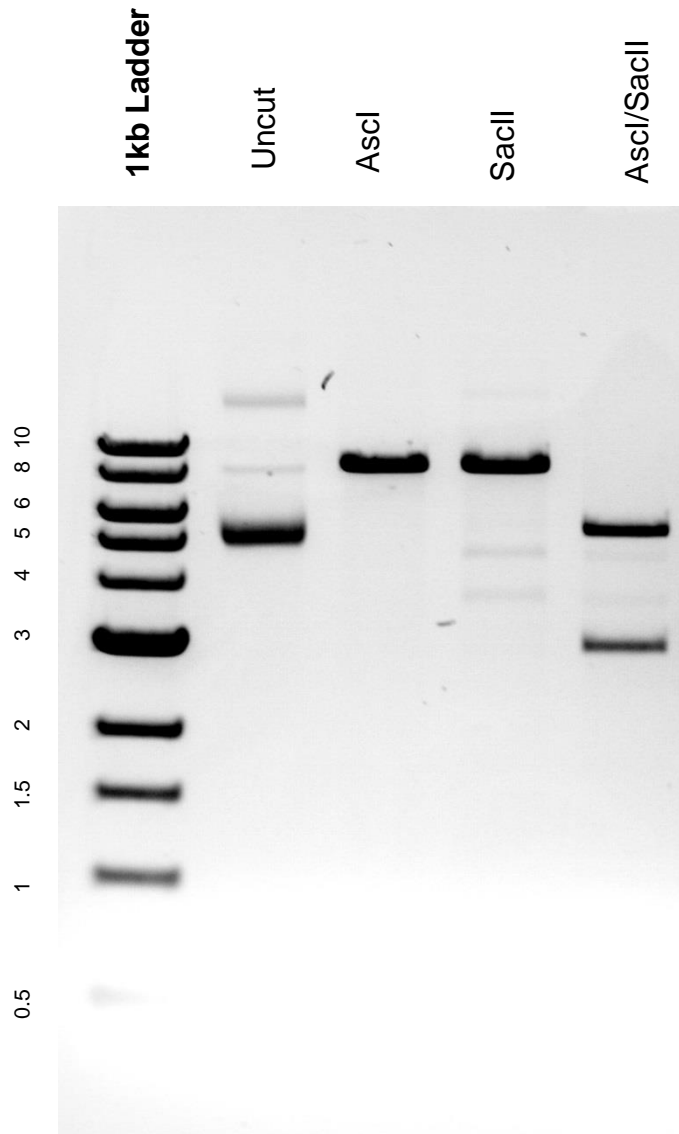


This gel depicts the NEB 1kb ladder and a digestion of the plasmid LD229 with the following enzymes: Ascl and SacII.

**Plasmid 69192:
LD229**



DNA digested with Ascl and SacII single digests and Ascl/SacII double digest for **2 hours**.

Gel: 0.8% agarose stained with 5 uL of ethidium bromide.

Ran for 2.5 hours at 60 volts.