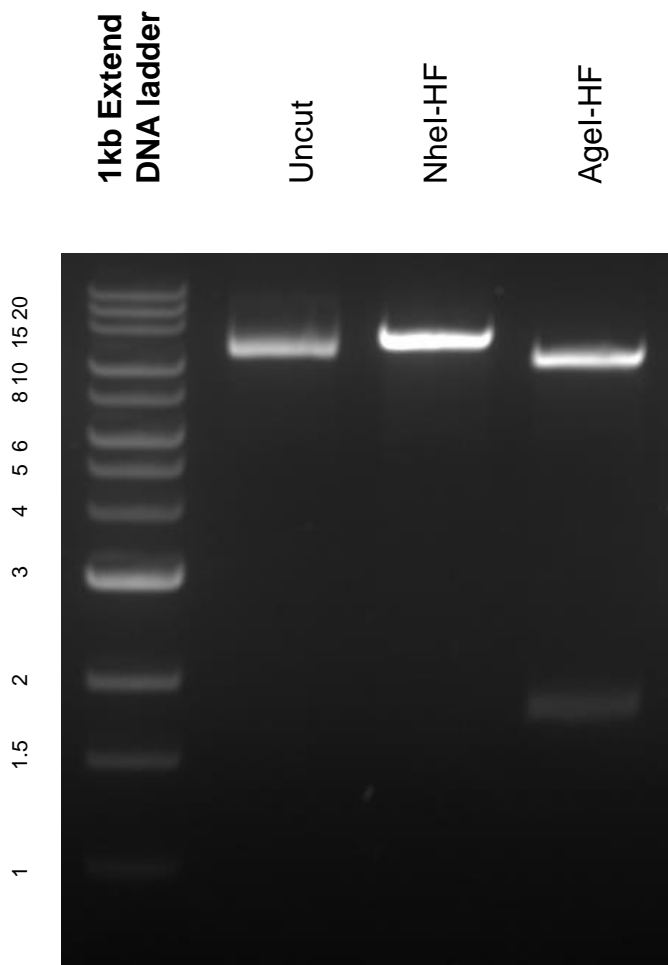


This gel depicts the NEB 1kb extend DNA ladder and a digestion of plasmid 70111 with NheI-HF and AgeI-HF.

## Plasmid 70111: pLenti-Synapsin-pHoenix-WPRE



DNA digested with NheI-HF and AgeI-HF for 3 hours.

Gel: 1% agarose stained with ethidium bromide. Run for 100 minutes at 100 volts.