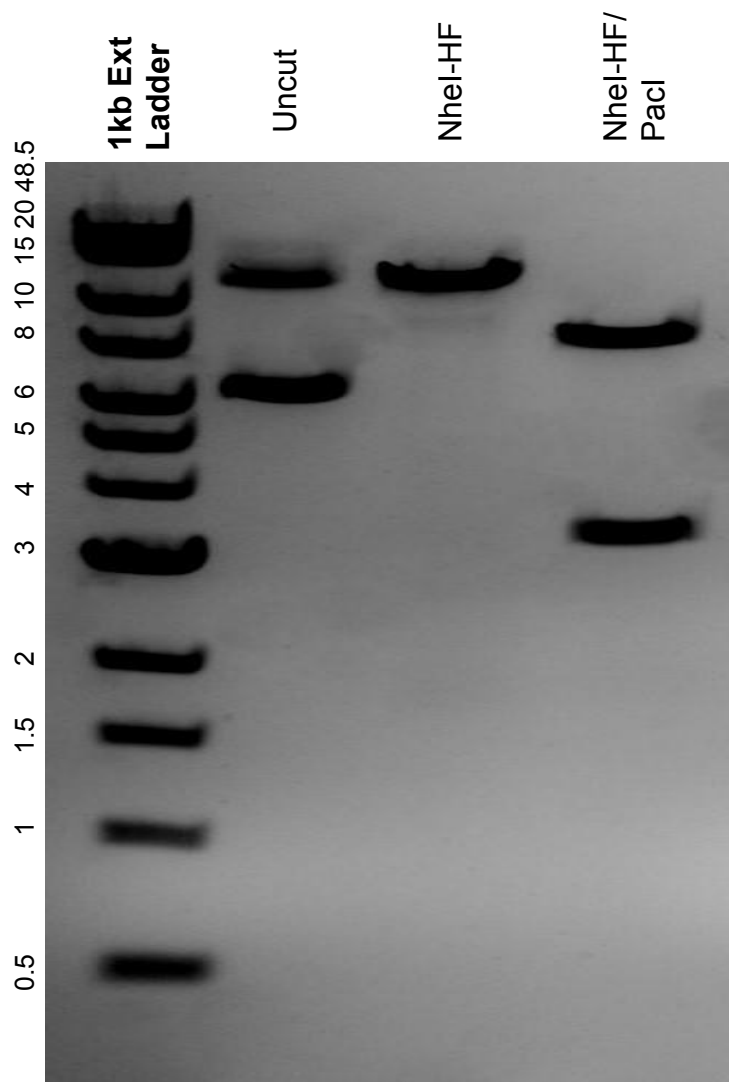


This gel depicts the NEB 1kb Extended Ladder and a digestion of the plasmid pLenti-Synapsin-pHoenix-WPRE with the following enzymes: NheI-HF, PacI

Plasmid 70111:
pLenti-Synapsin-pHoenix-WPRE



DNA digested with NheI-HF single digest and NheI-HF/PacI double digest for **2 hours**.

Gel: 0.8% agarose stained with SYBR Safe.

Ran for 1.25 hours at 100 volts.