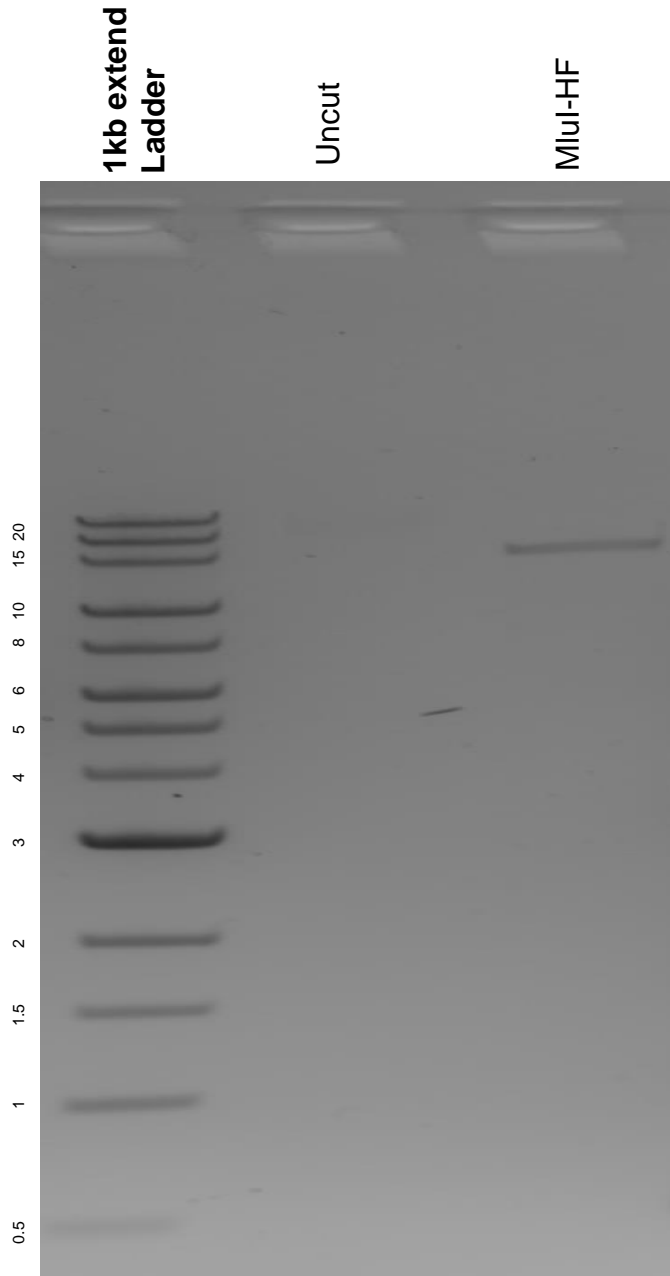


This gel depicts the NEB 1kb extend ladder and a digestion of the plasmid pLV hU6-sgRNA hUbC-dCas9-KRAB-T2a-Puro with the following enzyme: MluI-HF.

Plasmid 71236:
pLV hU6-sgRNA hUbC-dCas9-KRAB-
T2a-Puro



DNA digested with MluI-HF single for **2 hours**.

Gel: 0.8% agarose stained with 5 uL of ethidium bromide.

Ran for 1.5 hours at 100 volts.