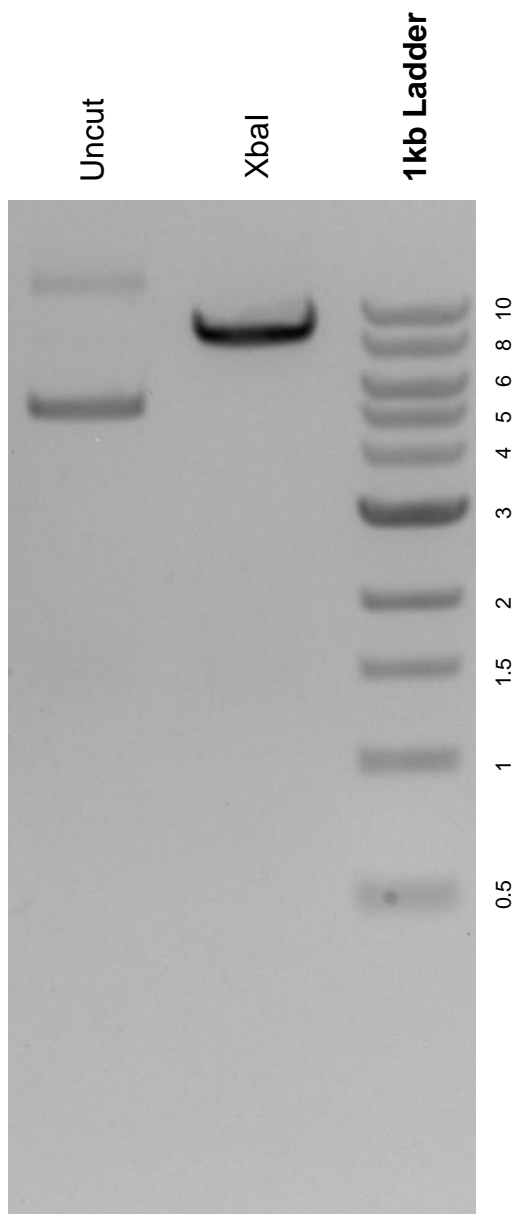


This gel depicts the NEB 1kb ladder and a digestion of the plasmid pFUGW-Pol2-ffLuc2-eGFP with the following enzymes: XbaI.

**Plasmid 71394:**  
pFUGW-Pol2-ffLuc2-eGFP



DNA digested with an XbaI single digest for **2 hours**.  
Gel: 0.8% agarose stained with 5 uL of ethidium bromide.  
Ran for 1.5 hours at 100 volts.