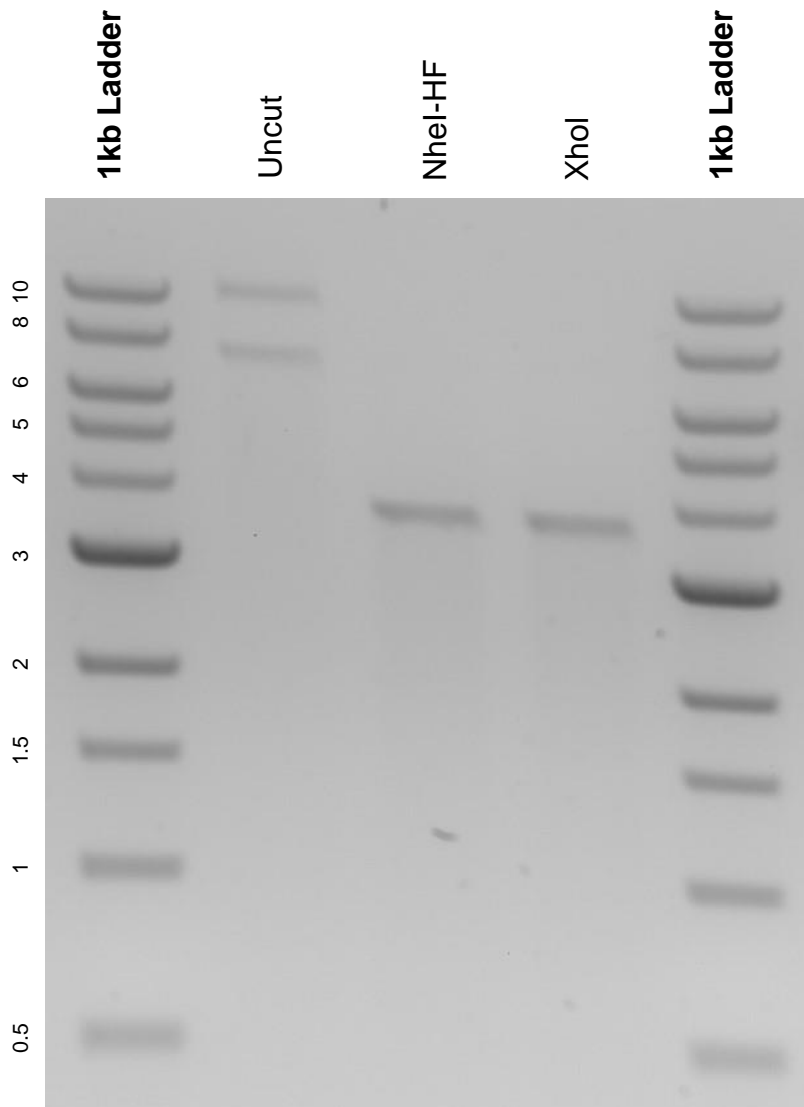


This gel depicts the NEB 1kb ladder and a digestion of the plasmid pG2K with the following enzymes: NheI-HF and Xho I.

Plasmid 71742: pG2K



DNA digested with NheI-HF and Xho I single digests for **2 hours**.
Gel: 0.8% agarose stained with 6 uL of ethidium bromide.
Ran for 1.5 hours at 100 volts.