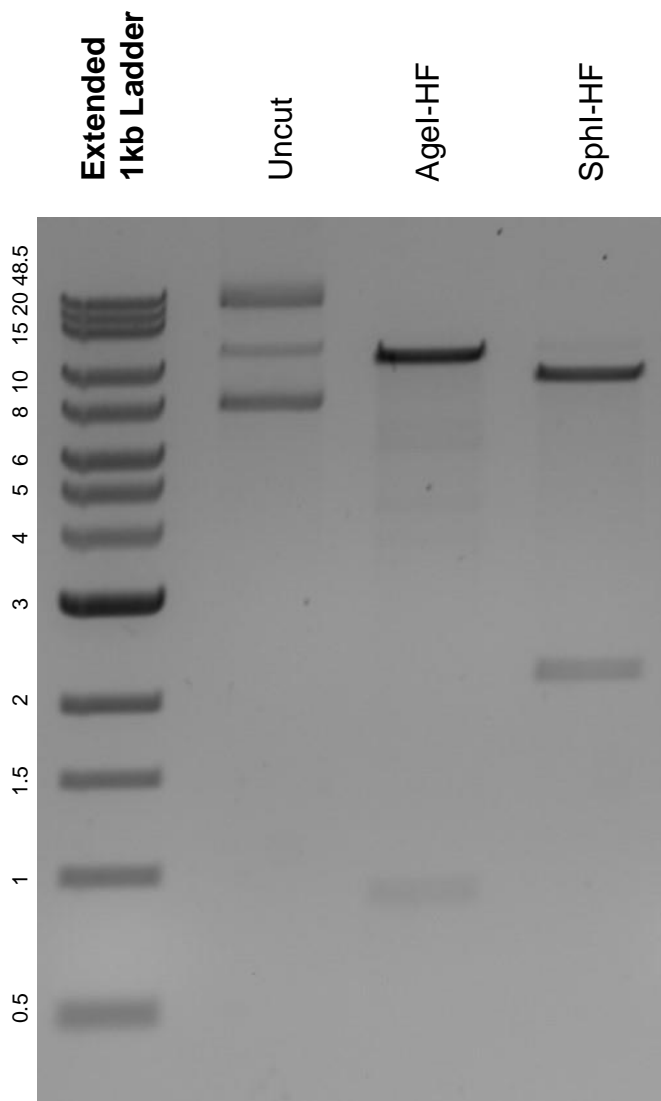


This gel depicts the NEB extended 1kb ladder and a digestion of the plasmid p405-BrdU-Inc with the following enzymes: AgeI-HF and SphI-HF.

Plasmid 71791:
p405-BrdU-Inc



DNA digested with AgeI-HF and SphI-HF single digests for **2 hours**.
Gel: 0.8% agarose stained with 5 uL of ethidium bromide.
Ran for 1.5 hours at 100 volts.