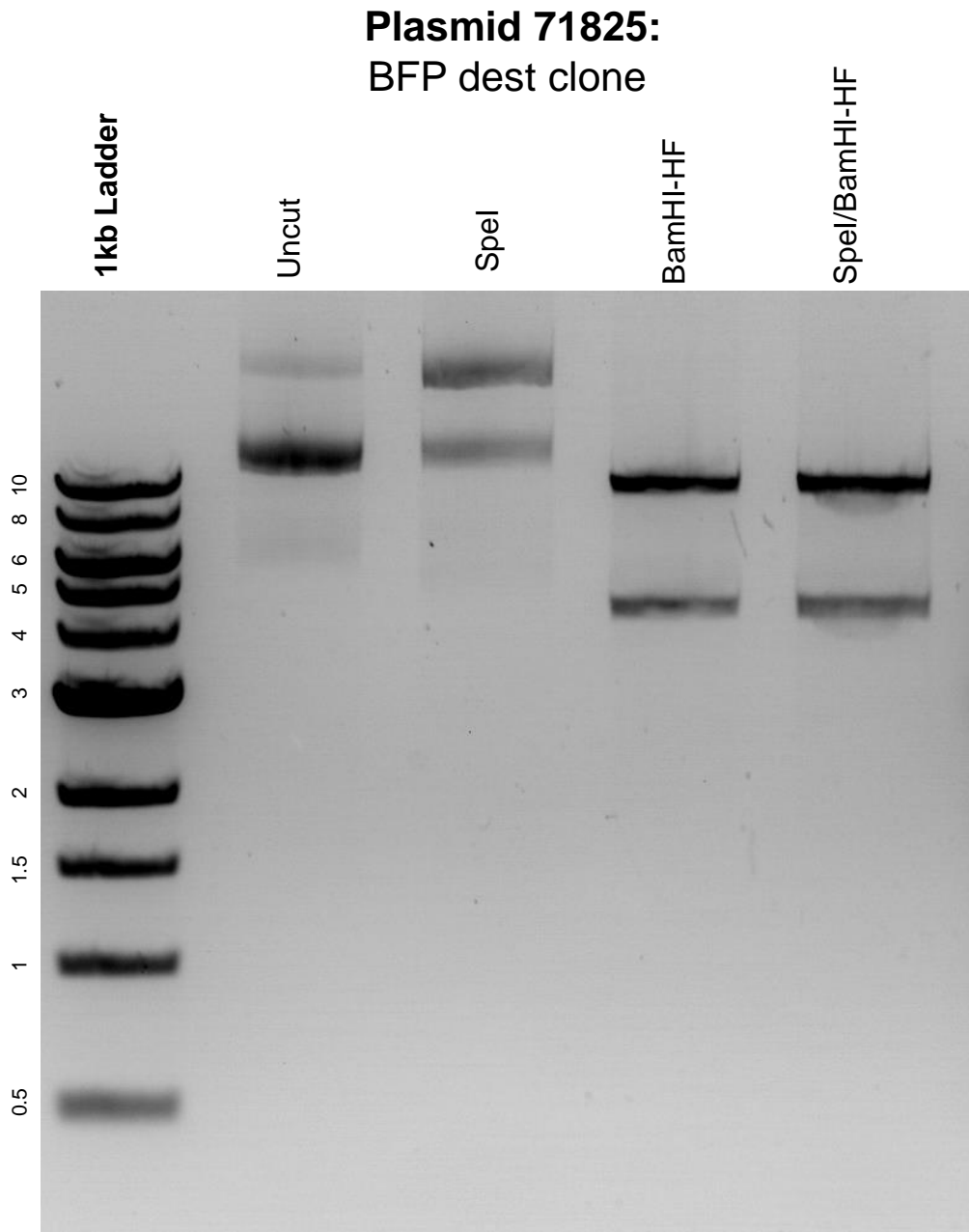


This gel depicts the NEB 1kb ladder and a digestion of the plasmid BFP dest clone with the following enzymes: SpeI and BamHI-HF



DNA digested with SpeI and BamHI-HF single digests and SpeI/BamHI-HF double digest for **2 hours**.

Gel: 0.8% agarose stained with 5 uL of ethidium bromide.

Ran for 1.5 hours at 100 volts.