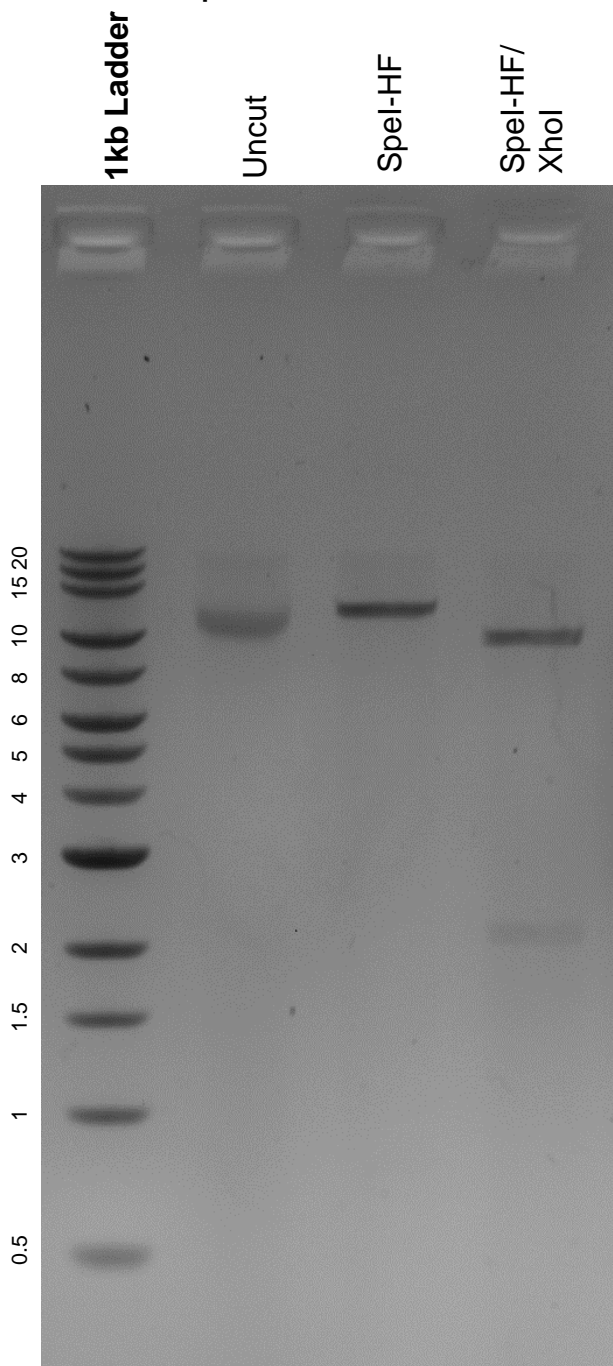


This gel depicts the NEB 1kb extend ladder and a digestion of the plasmid pNICKclos2.0 with the following enzymes: SpeI-HF and XhoI.

Plasmid 73228:
pNICKclos2.0



DNA digested with SpeI-HF single digest and SpeI-HF/XhoI double digest for **2 hours**.
Gel: 0.8% agarose stained with 5 uL of ethidium bromide.
Ran for 1.5 hours at 100 volts.