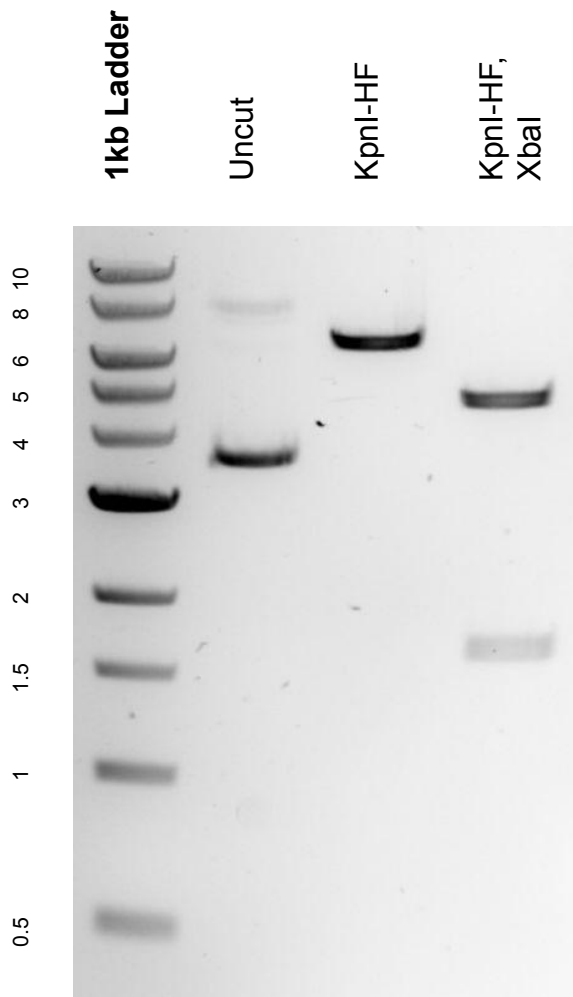


This gel depicts the NEB 1kb Ladder and a digestion of the plasmid **pCFD5** with the following enzymes: **KpnI-HF, XbaI**

Plasmid 73914:
pCFD5



DNA digested with a KpnI-HF single digest and a KpnI-HF, XbaI double digest for **2 hours**.
Gel: 0.8% agarose stained with 15 uL of SYBR Safe.
Ran for 1.25 hours at 100 volts.