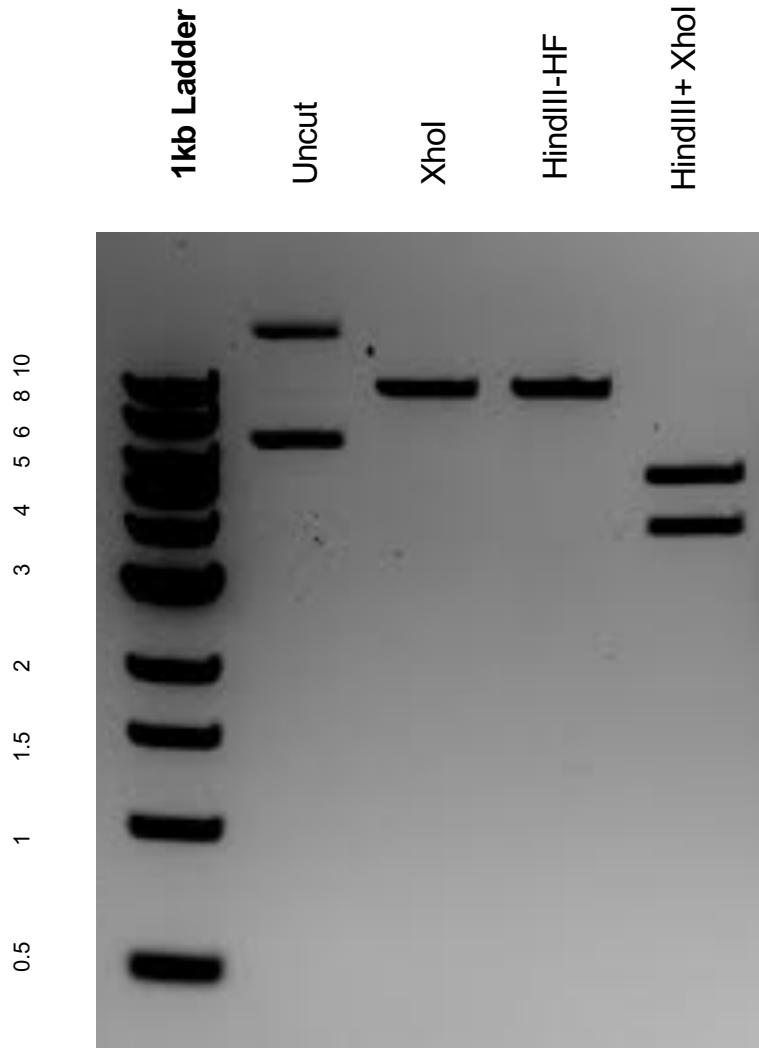


This gel depicts the NEB 1kb ladder and a digestion of the plasmid 74041 with the following enzymes: XhoI, HindIII, and HindIII+XhoI

Plasmid 74041: pTE4396



DNA digested with 2 single digests and 1 double digest for **2 hours**.
Gel: 0.8% agarose stained with 5 uL of ethidium bromide.
Ran for 1.5 hours at 100 volts.