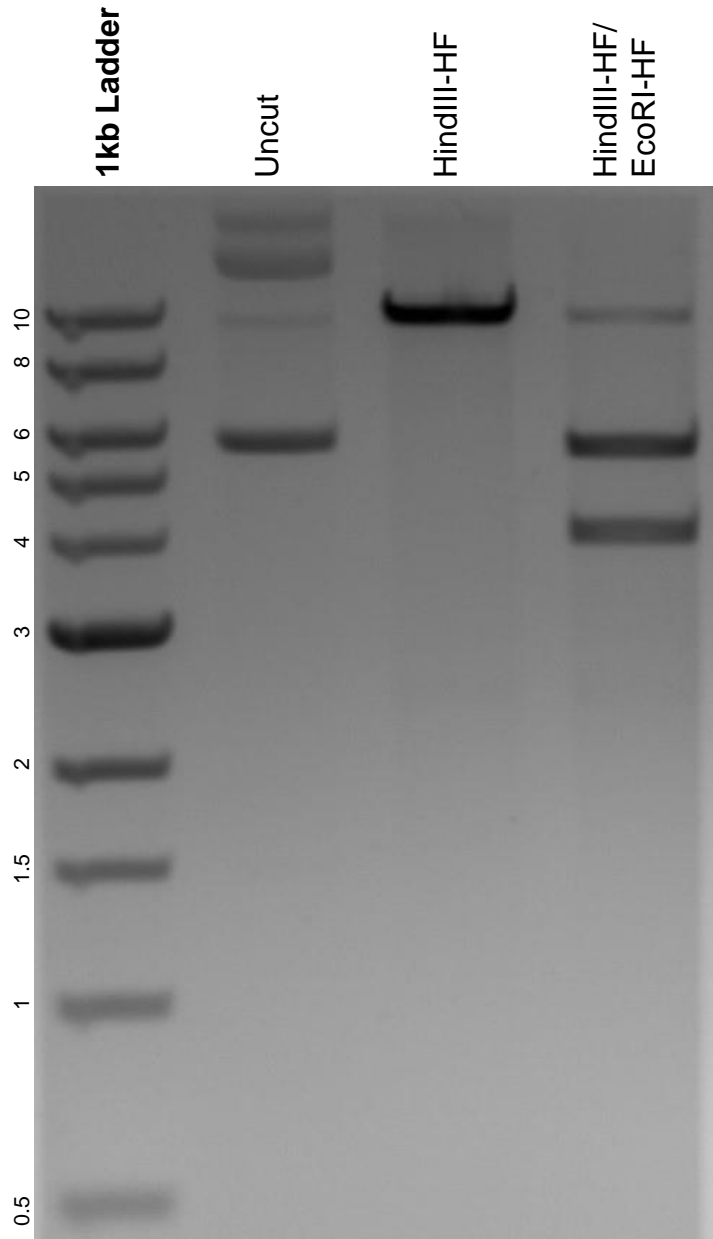


This gel depicts the NEB 1kb ladder and a digestion of the plasmid pTE4396 with the following enzymes: HindIII-HF and EcoRI-HF.

**Plasmid 74041:**  
pTE4396



DNA digested with HindIII-HF single digest and HindIII-HF/ EcoRI-HF double digest for **2 hours**.

Gel: 0.8% agarose stained with 6 uL of ethidium bromide.

Ran for 1.5 hours at 100 volts.