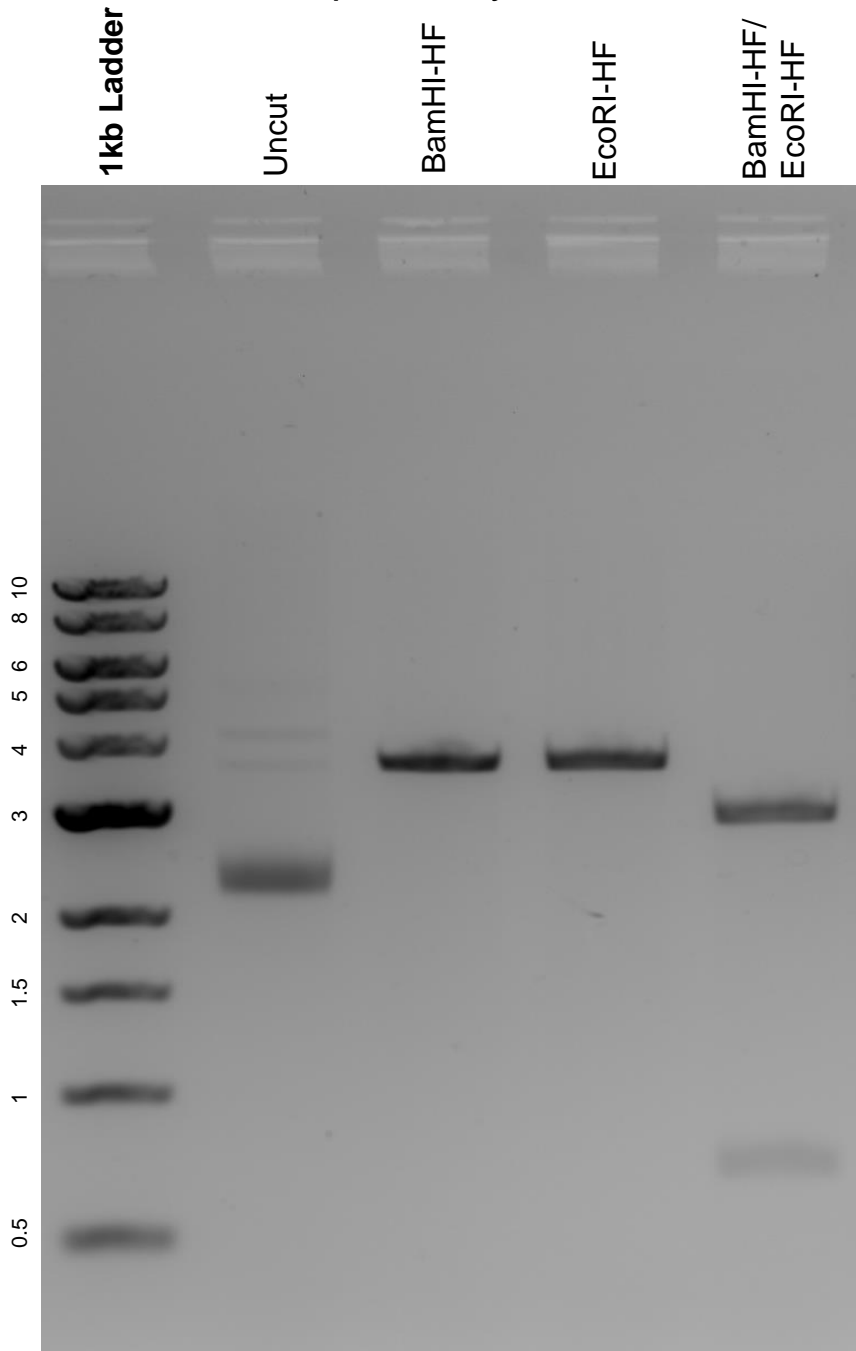


This gel depicts the NEB 1kb ladder and a digestion of the plasmid pNCS-CyOFP with the following enzymes: BamHI-HF and EcoRI-HF.

Plasmid 74278:
pNCS-CyOFP



DNA digested with BamHI-HF and EcoRI-HF single digests and BamHI-HF/EcoRI-HF double digest for **2 hours**.

Gel: 0.8% agarose stained with 5 uL of ethidium bromide.

Ran for 2 hours at 80 volts.