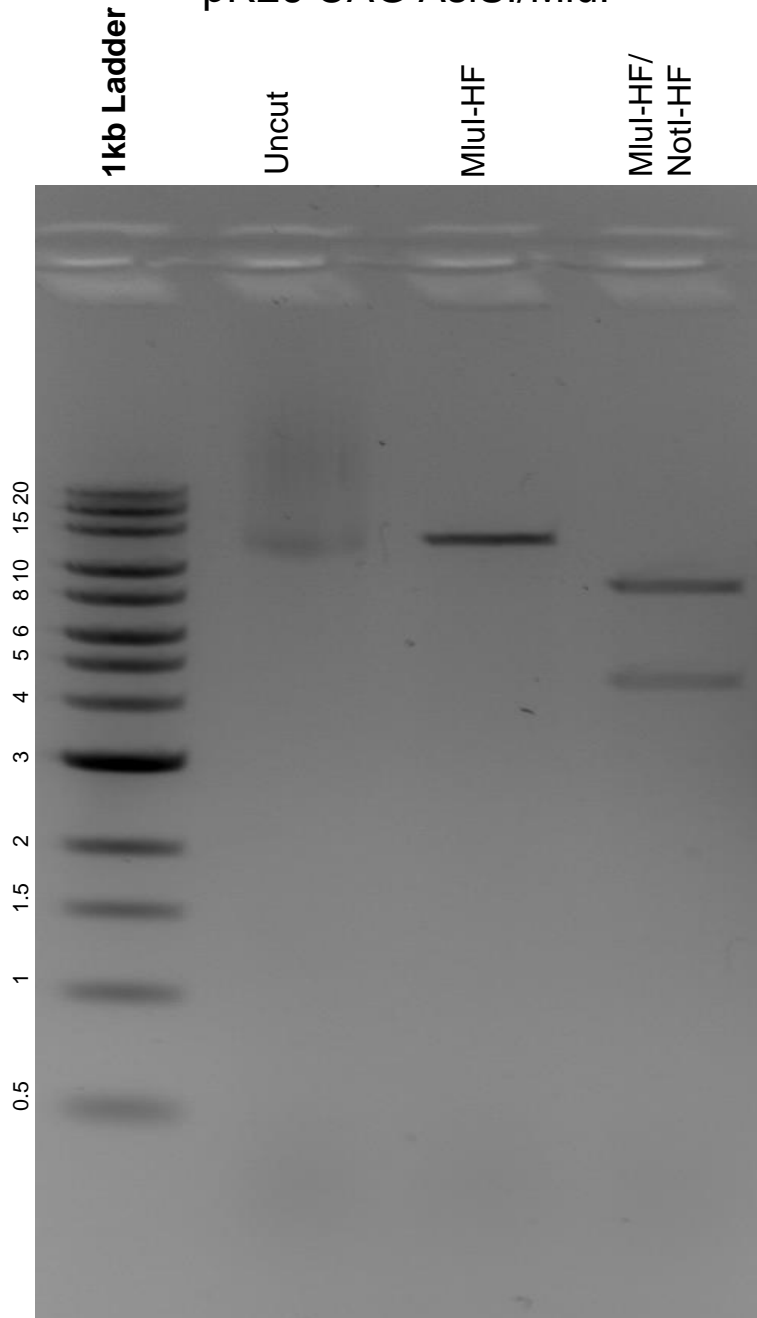


This gel depicts the NEB 1kb ladder and a digestion of the plasmid pR26 CAG AsiSI/MluI with the following enzymes: MluI-HF and NotI-HF.

Plasmid 74286:
pR26 CAG AsiSI/MluI



DNA digested with MluI-HF single digest and MluI-HF/NotI-HF double digest for **2 hours**.

Gel: 0.8% agarose stained with 5 uL of ethidium bromide.

Ran for 2 hours at 80 volts.