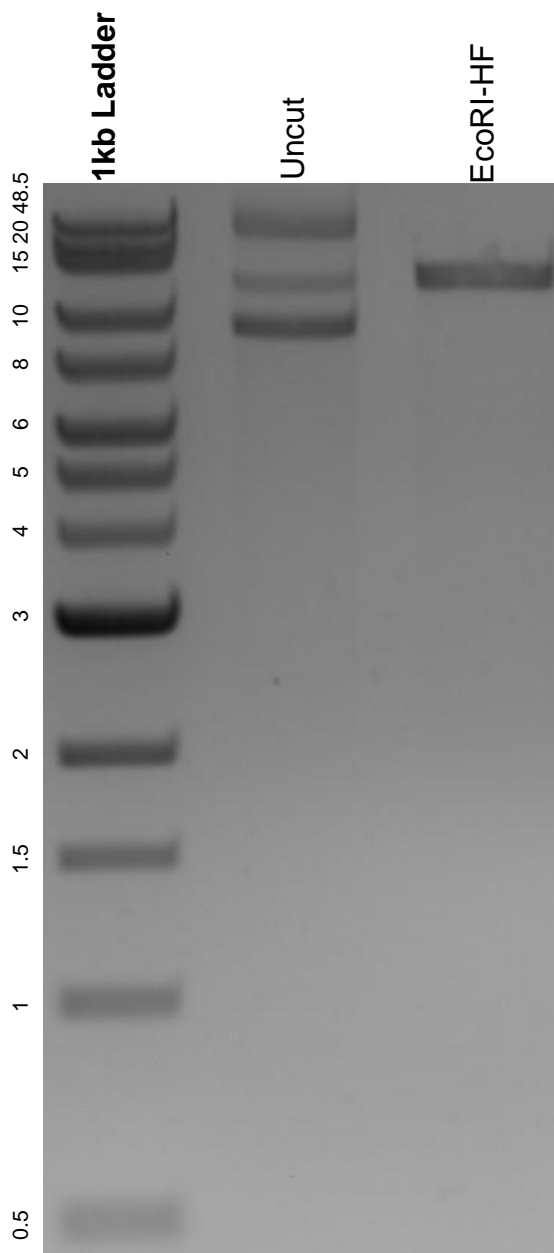


This gel depicts the NEB 1kb extend ladder and a digestion of the plasmid pGWB502 with the following enzymes: EcoRI-HF.

Plasmid 74844:
pGWB502



DNA digested with an EcoRI-HF single digest for **2 hours**.
Gel: 0.8% agarose stained with 5 uL of ethidium bromide.
Ran for 1.5 hours at 100 volts.