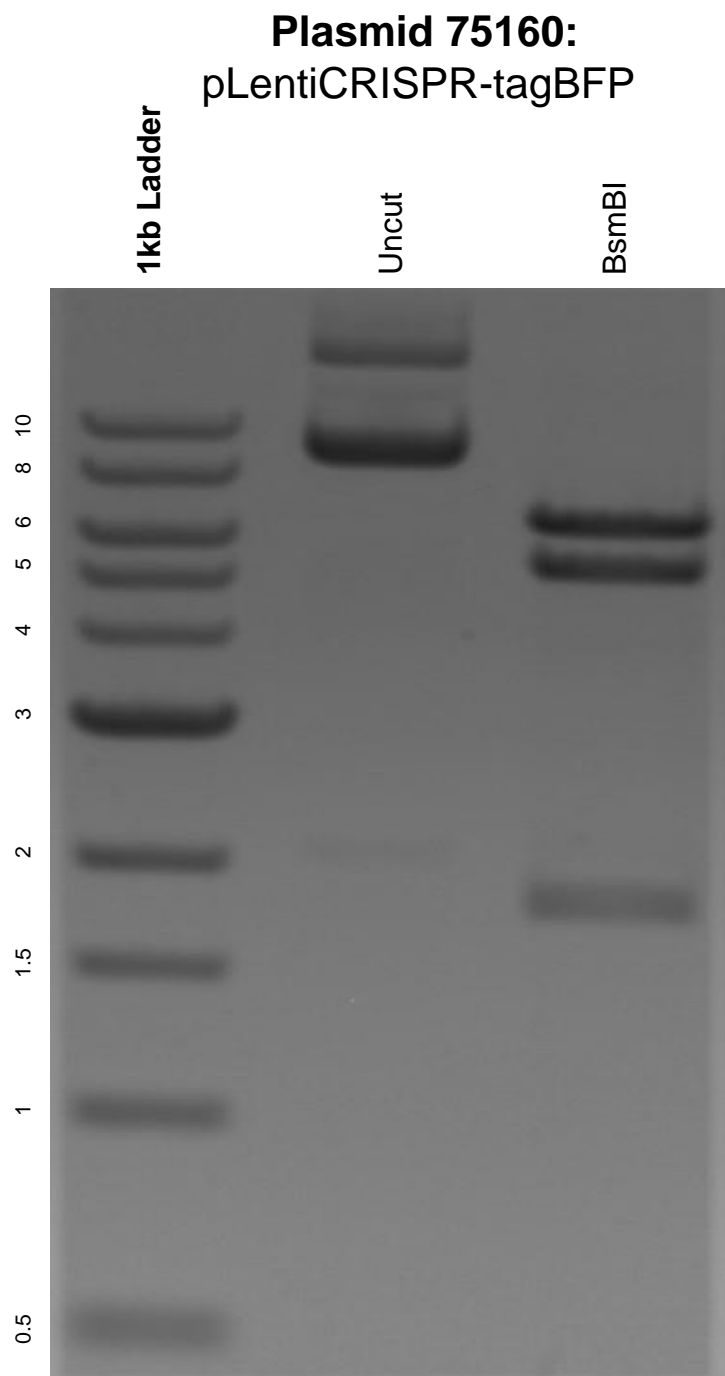


This gel depicts the NEB 1kb ladder and a digestion of the plasmid pLentiCRISPR-tagBFP with the following enzymes: BsmBI.



DNA digested with BsmBI single digest for **2 hours**.

Gel: 0.8% agarose stained with 6 uL of ethidium bromide.

Ran for 1.5 hours at 100 volts.