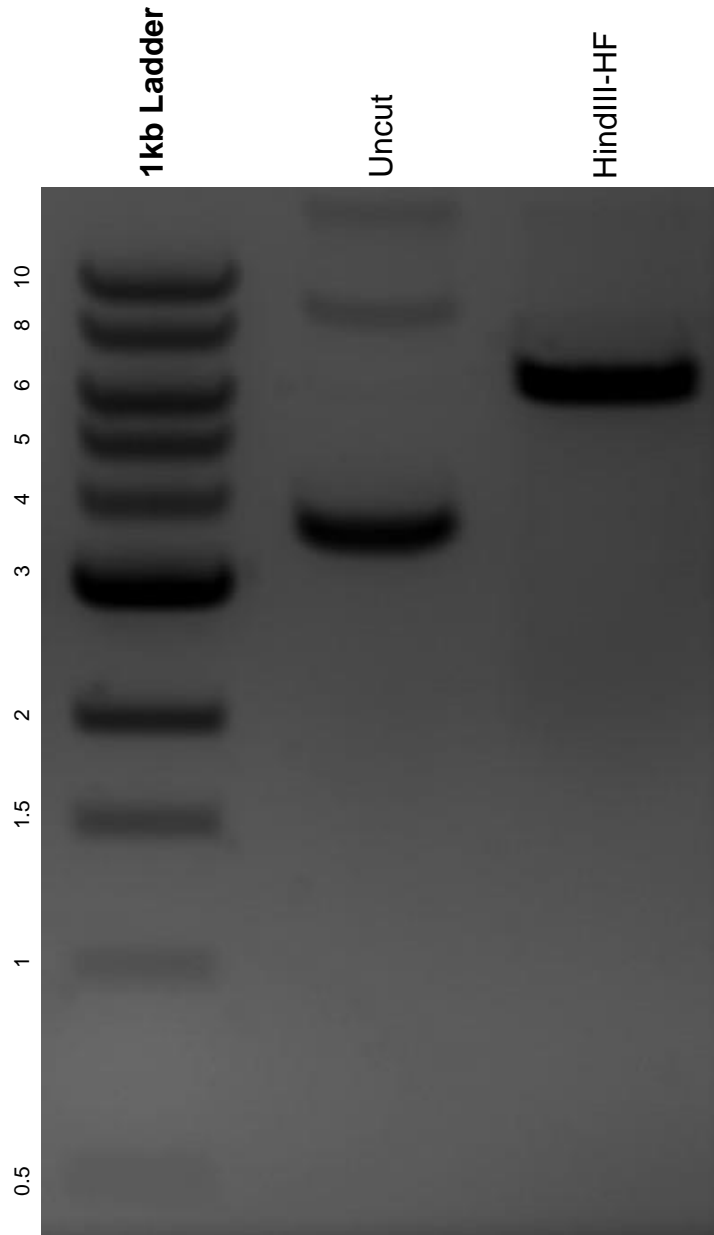


This gel depicts the NEB 1kb ladder and a digestion of the plasmid pMAL-c2X with the following enzymes: HindIII-HF.

Plasmid 75286:
pMAL-c2X



DNA digested with HindIII-HF single digest for **2 hours**.
Gel: 0.8% agarose stained with 6 uL of ethidium bromide.
Ran for 1.5 hours at 100 volts.