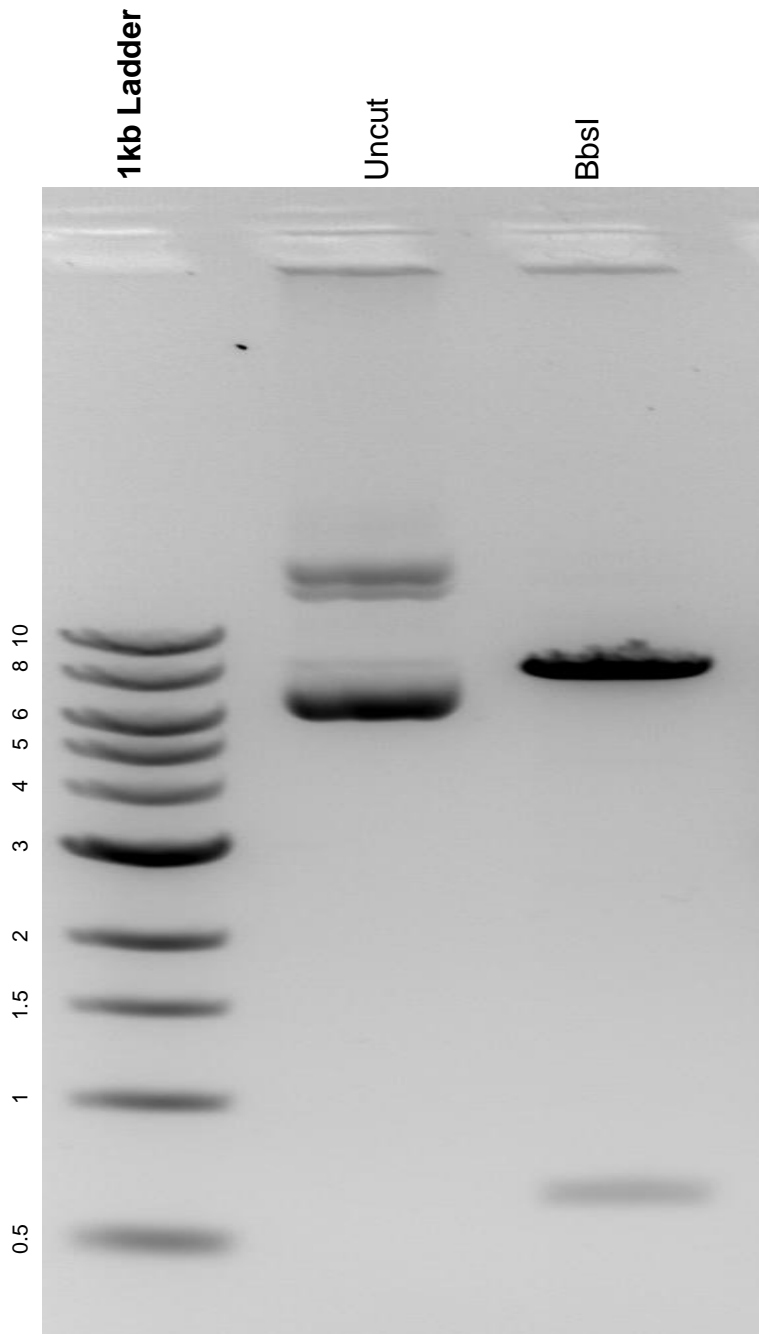


This gel depicts the NEB 1kb ladder and a digestion of the plasmid pLH-sgRNA1-2XPP7 with the following enzyme: BbsI.

Plasmid 75390:
pLH-sgRNA1-2XPP7



DNA digested with BbsI single digest for **2 hours**.
Gel: 0.8% agarose stained with 5 uL of ethidium bromide.
Ran for 1.5 hours at 100 volts.