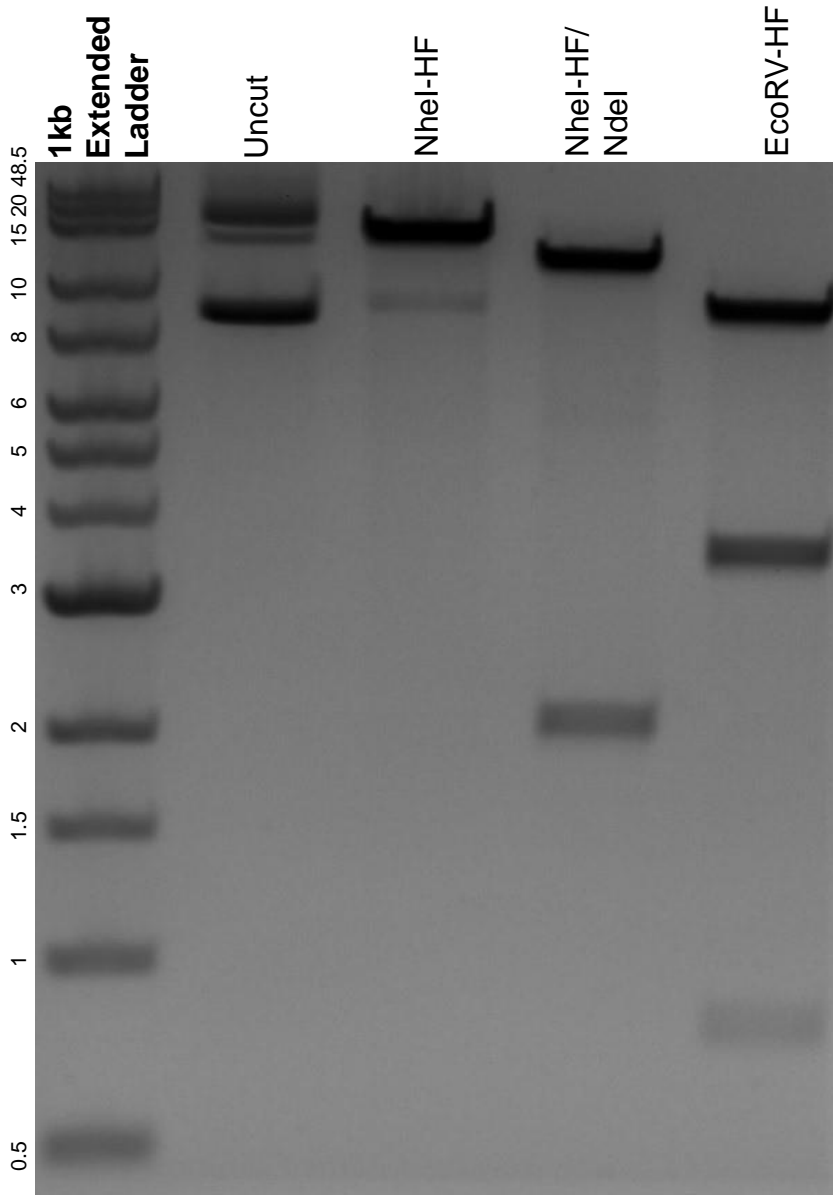


This gel depicts the NEB 1kb extended ladder and a digestion of the plasmid pLentiCas9-T2A-BFP with the following enzymes: NheI-HF, NdeI, and EcoRV-HF.

Plasmid 78547:
pLentiCas9-T2A-BFP



DNA digested with NheI-HF and EcoRV-HF single digests and NheI-HF/ NdeI double digest for **2 hours**.

Gel: 0.8% agarose stained with 6 uL of ethidium bromide.

Ran for 1.5 hours at 100 volts.