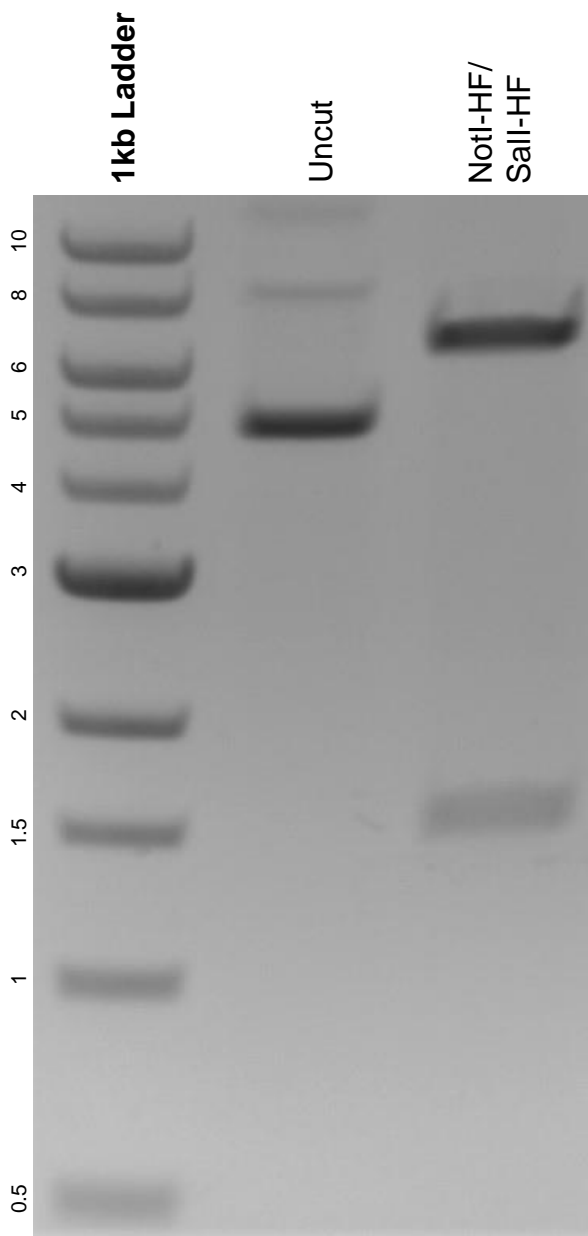


This gel depicts the NEB 1kb ladder and a digestion of the plasmid pSRK2721 with the following enzymes: NotI-HF and Sall-HF.

Plasmid 78572: pSRK2721



DNA digested with NotI-HF/ Sall-HF double digest for **2 hours**.
Gel: 0.8% agarose stained with 6 uL of ethidium bromide.
Ran for 1.5 hours at 100 volts.