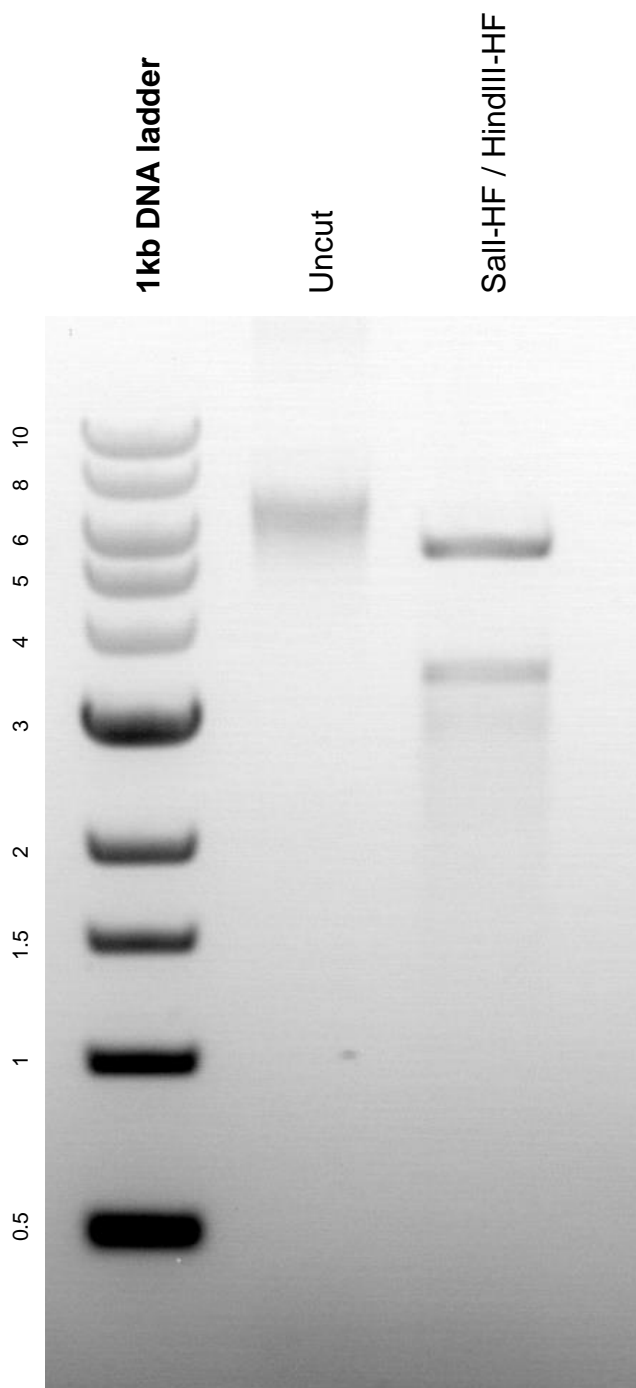


This gel depicts the NEB 1kb DNA ladder and a digestion of plasmid 80412 with Sall-HF and HindIII-HF .

**Plasmid #: 80412  
DT960**



DNA digested with Sall-HF / HindIII-HF double digest for **2.5 hours**. Gel: 0.8% agarose stained with ethidium bromide. Run for 2 hours at 80 volts.