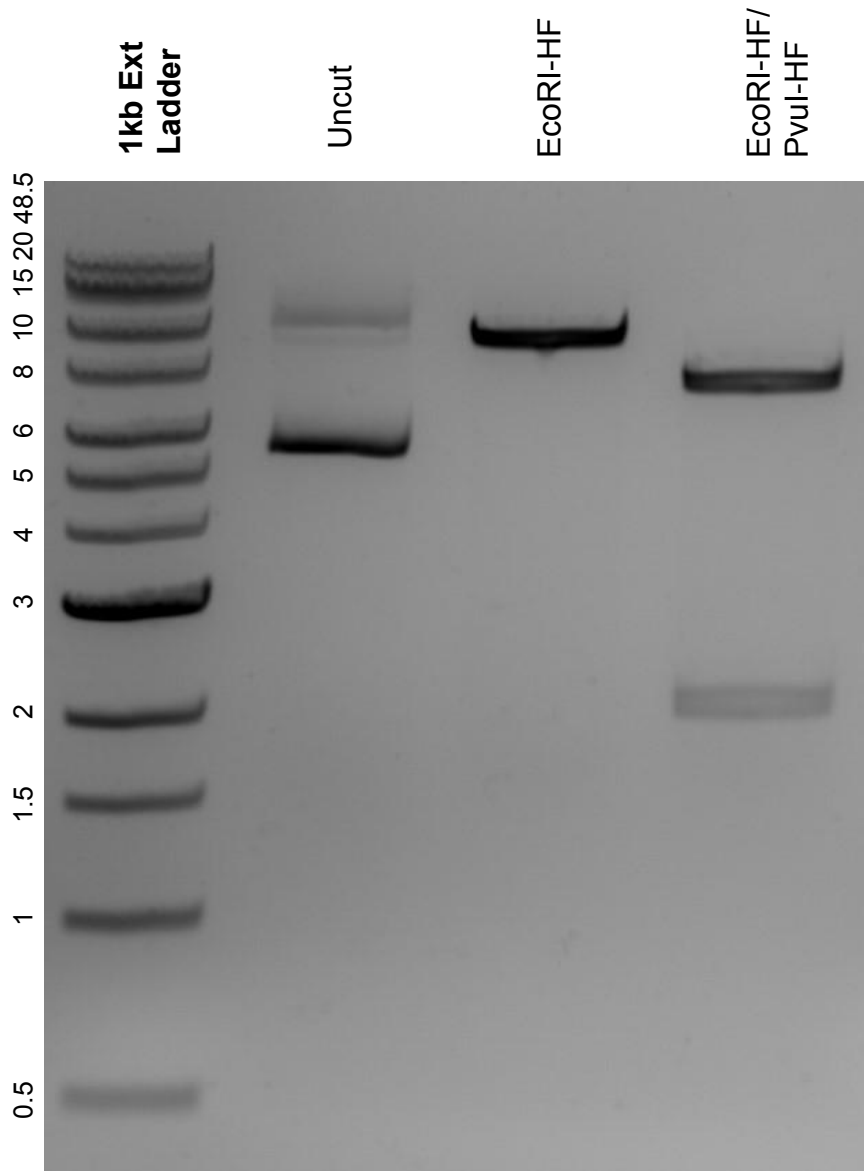


This gel depicts the NEB 1kb Extend Ladder and a digestion of the plasmid pCAS9-mCherry empty with the following enzymes: EcoRI-HF, PvuI-HF

Plasmid 80975:
pCAS9-mCherry empty



DNA digested with EcoRI-HF single digest and EcoRI-HF/PvuI-HF double digest for **2 hours**.
Gel: 0.8% agarose stained with 5 uL of ethidium bromide.
Ran for 1.5 hours at 100 volts.