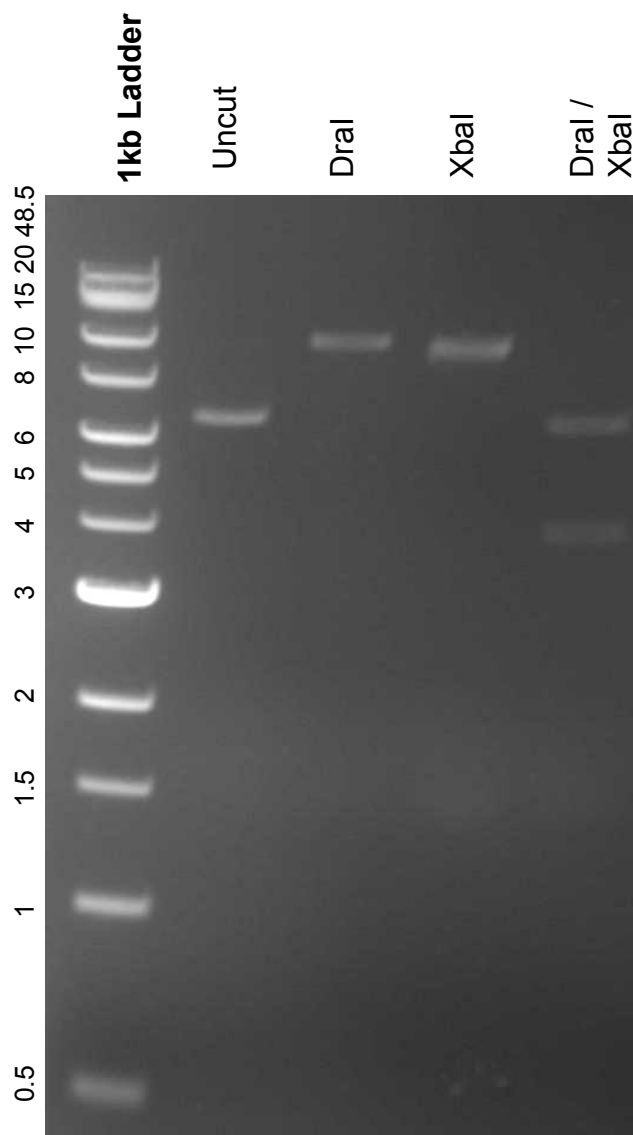


This gel depicts the NEB 1kb Extend Ladder and a digestion of the plasmid pENTR221 UBR5 with the following enzymes: Dral, Xbal

Plasmid 81062:
pENTR221 UBR5



DNA digested with Dral and Xbal single digests and Dral/Xbal double digest for **2 hours**.

Gel: 0.8% agarose stained with 5 uL of ethidium bromide.

Ran for 1.5 hours at 100 volts.