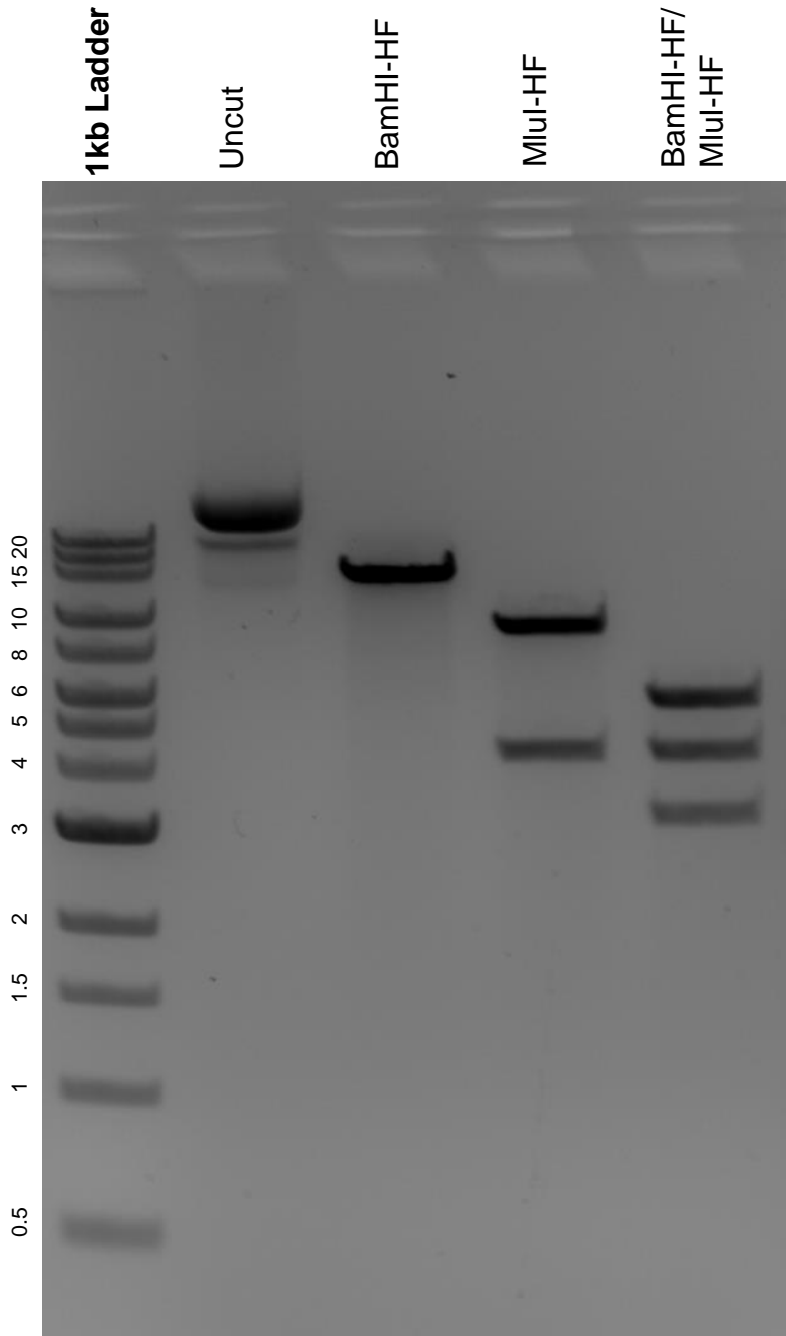


This gel depicts the NEB 1kb extend ladder and a digestion of the plasmid miReporter-CAG with the following enzymes: BamHI-HF and MluI-HF.

**Plasmid 82478:
miReporter-CAG**



DNA digested with BamHI-HF and MluI-HF single digests and BamHI-HF/MluI-HF double digest for **2 hours**.

Gel: 0.8% agarose stained with 5 uL of ethidium bromide.

Ran for 1.5 hours at 100 volts.