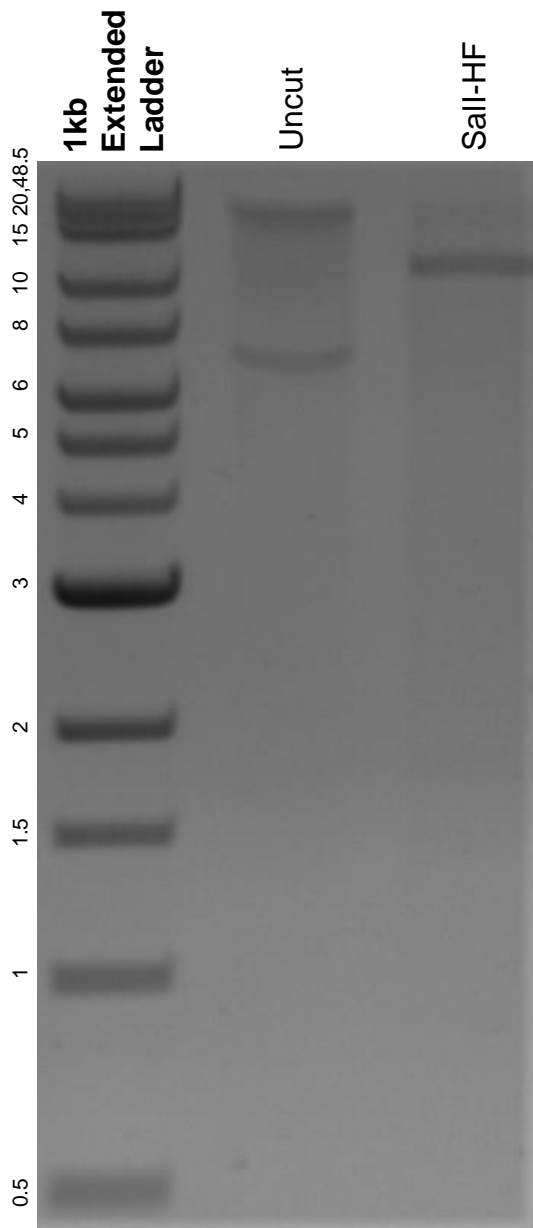


This gel depicts the NEB 1kb extended ladder and a digestion of the plasmid 3xFLAG-dCas9/MSCV-EGFP with the following enzymes: Sall-HF.

Plasmid 82613:
3xFLAG-dCas9/MSCV-EGFP



DNA digested with Sall-HF single digest for **2 hours**.
Gel: 0.8% agarose stained with 6 uL of ethidium bromide.
Ran for 1.5 hours at 100 volts.