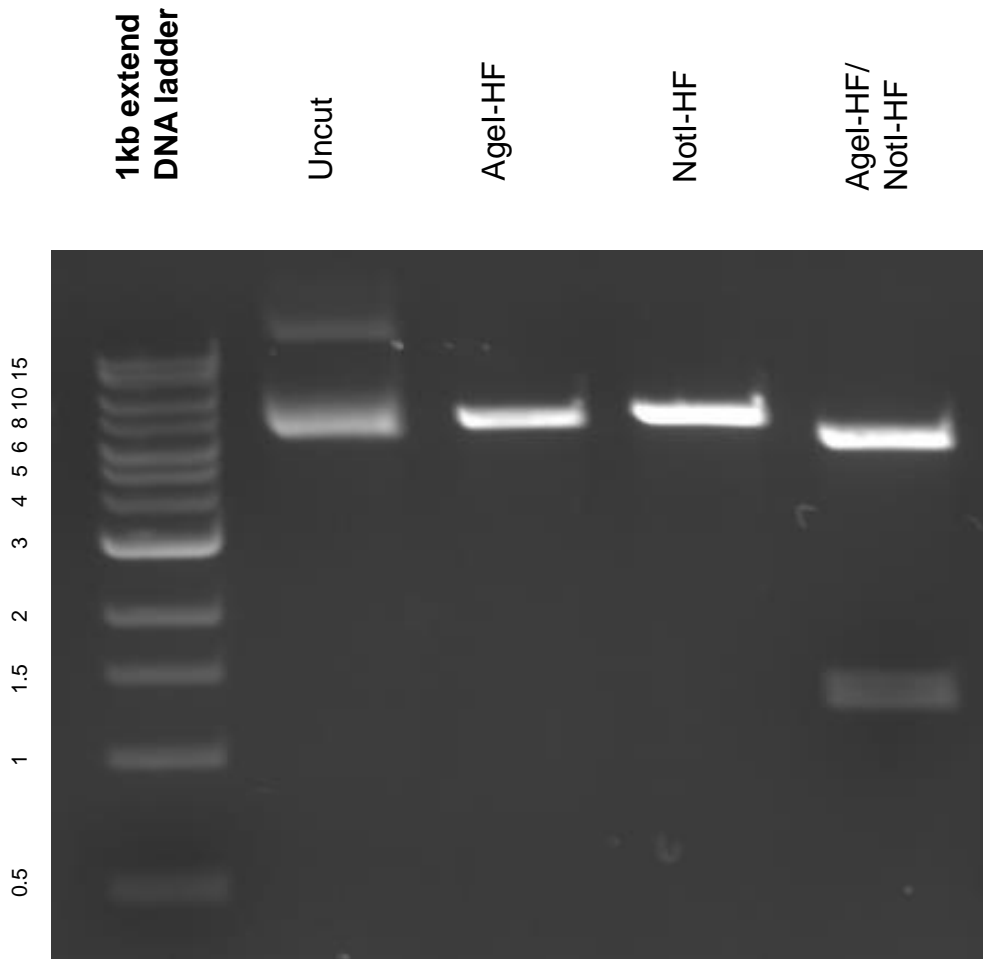


This gel depicts the NEB 1kb extend DNA ladder and a digestion of plasmid 83356 with Agel-HF, NotI-HF, and Agel-HF/NotI-HF.

**Plasmid 83356:  
pMXs-3XHA-EGFP-OMP25**



DNA digested with Agel-HF, NotI-HF, and and Agel-HF/NotI-HF digests for **3 hours**. Gel: 1% agarose stained with ethidium bromide. Run for 1 hour at 100 volts.