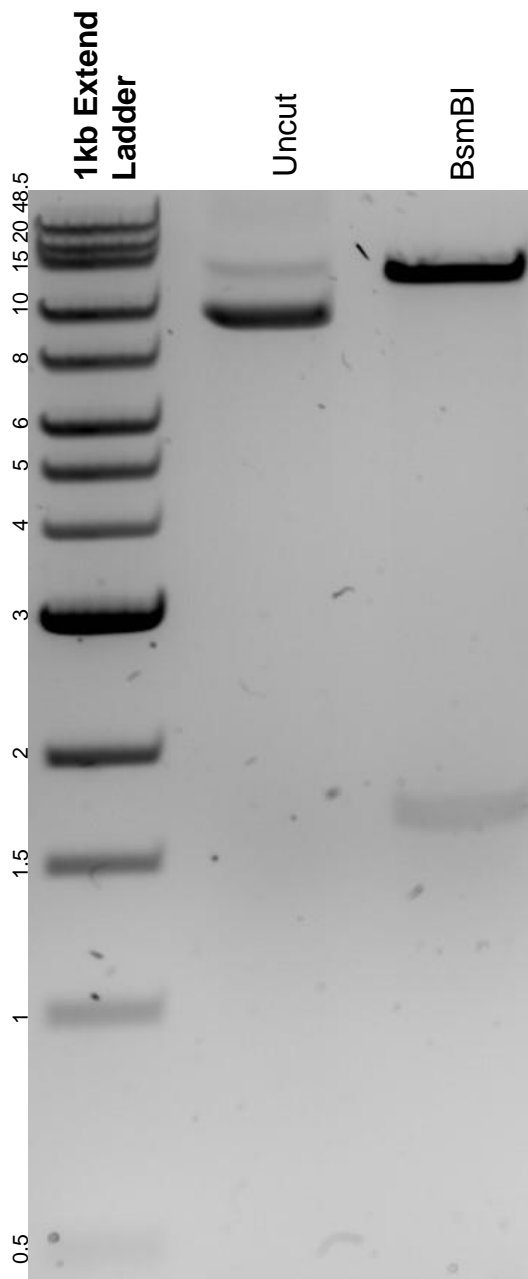


This gel depicts the NEB 1kb extend ladder and a digestion of the plasmid lentiCRISPR v2-Blast with the following enzyme: BsmBI.

Plasmid 83480:
lentiCRISPR v2-Blast



DNA digested with a BsmBI single digest for **2 hours**.
Gel: 0.8% agarose stained with 5 uL of ethidium bromide.
Ran for 1.5 hours at 100 volts.