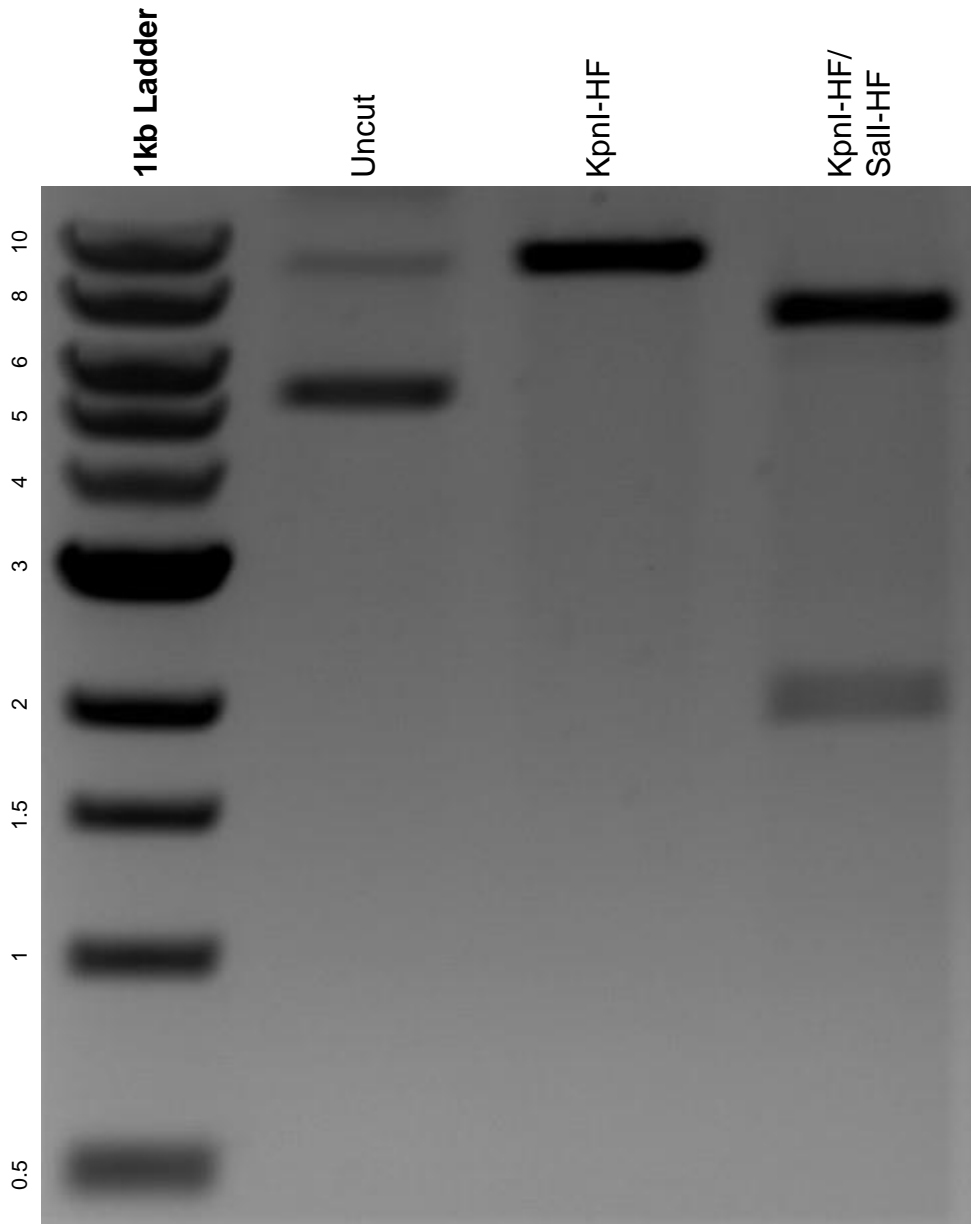


This gel depicts the NEB 1kb ladder and a digestion of the plasmid pLJM5-WT PHGDH with the following enzymes: KpnI-HF and Sall-HF.

**Plasmid 83901:**  
pLJM5-WT PHGDH



DNA digested with KpnI-HF single digest and KpnI-HF/ Sall-HF double digest for **2 hours**.

Gel: 0.8% agarose stained with 6 uL of ethidium bromide.

Ran for 1.5 hours at 100 volts.