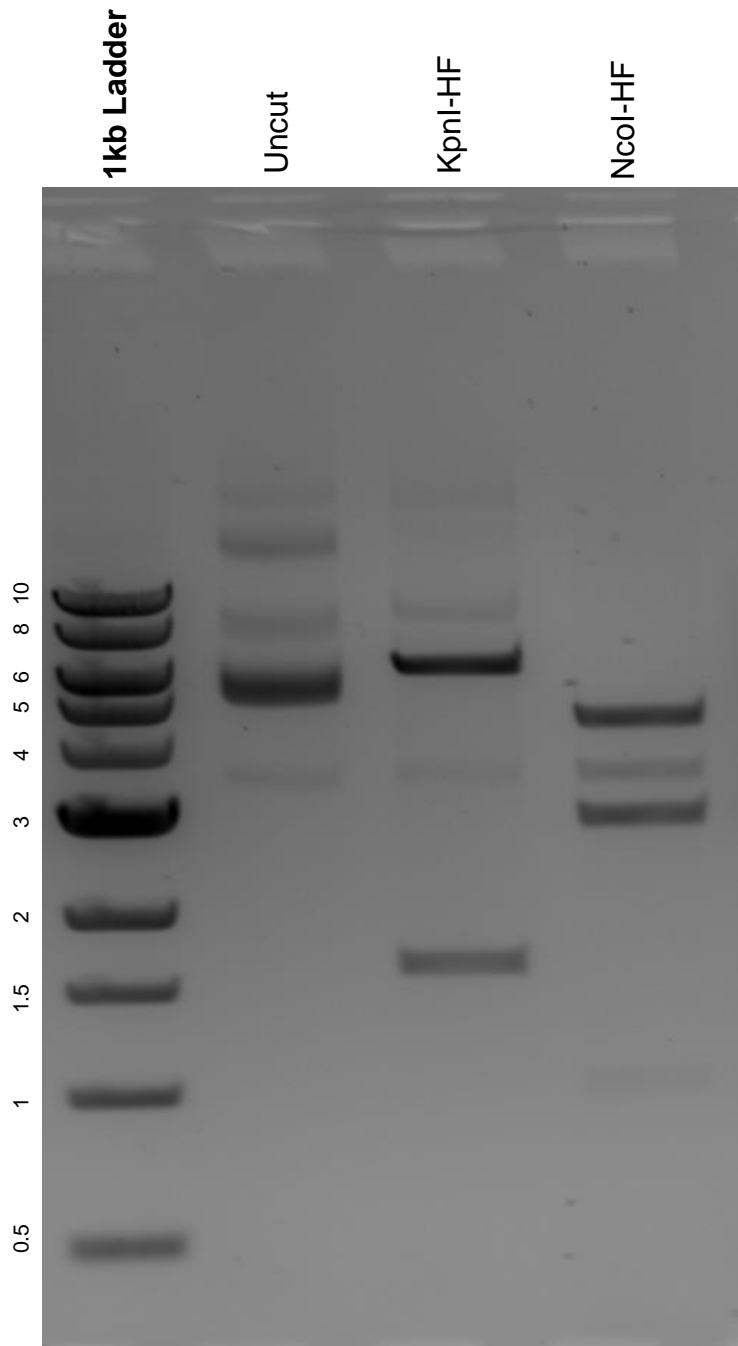


This gel depicts the NEB 1kb ladder and a digestion of the plasmid Clover-Geminin(1-110) with the following enzymes: KpnI-HF and NcoI-HF.

Plasmid 83915:
Clover-Geminin(1-110)



DNA digested with KpnI-HF and NcoI-HF single digests for **2 hours**.
Gel: 0.8% agarose stained with 5 uL of ethidium bromide.
Ran for 1.5 hours at 100 volts.