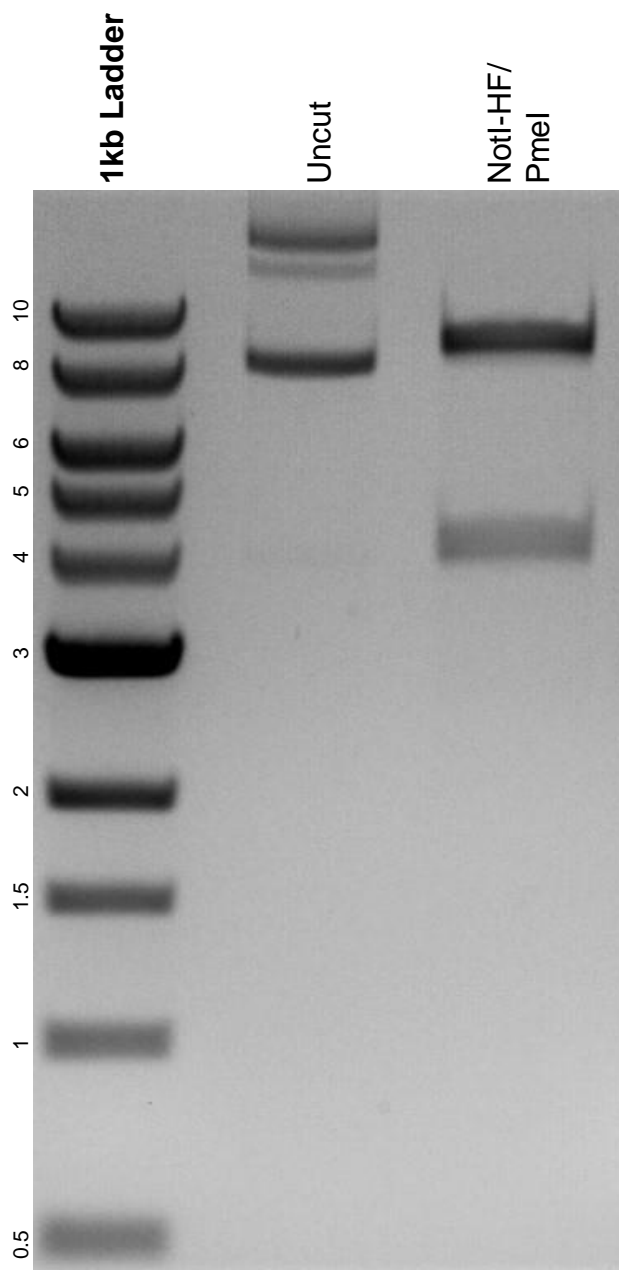


This gel depicts the NEB 1kb ladder and a digestion of the plasmid iCas with the following enzymes: NotI-HF and PmeI.

**Plasmid 84232:**  
iCas



DNA digested with NotI-HF/ PmeI double digest for **2 hours**.  
Gel: 0.8% agarose stained with 6 uL of ethidium bromide.  
Ran for 1.5 hours at 100 volts.