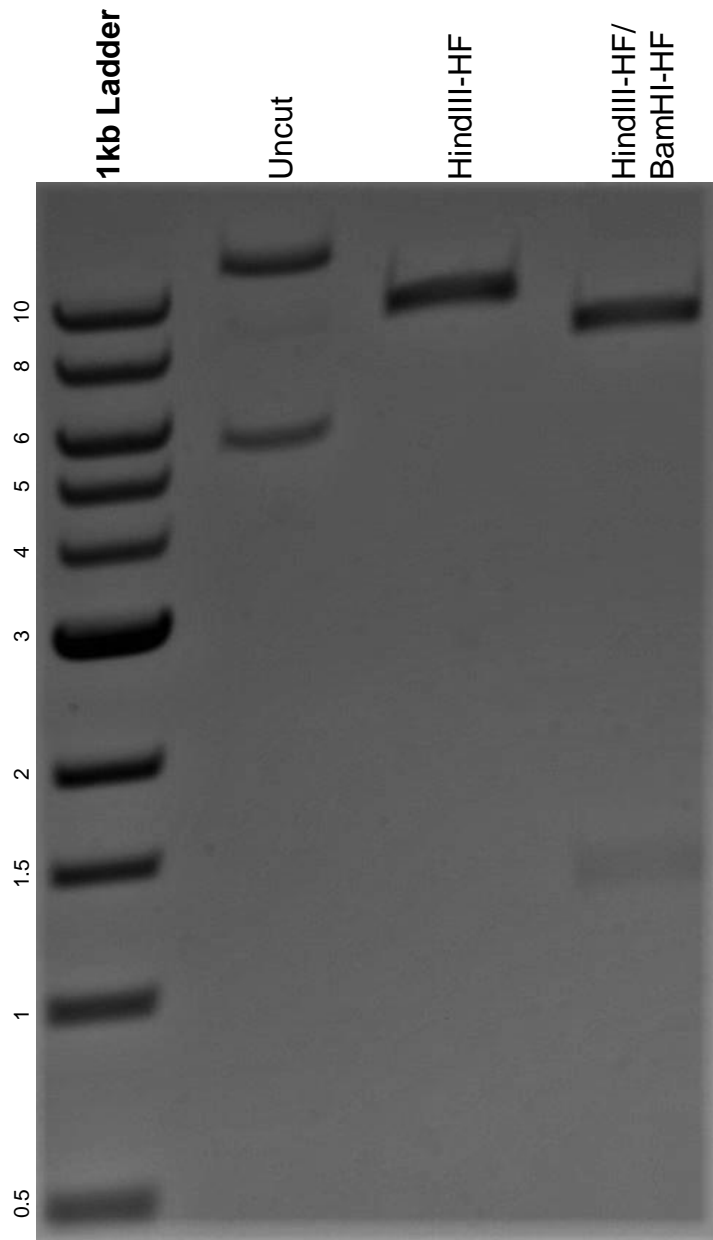


This gel depicts the NEB 1kb ladder and a digestion of the plasmid pAAV-RAM-d2TTA::TRE-ChR2-WPREpA with the following enzymes: HindIII-HF and BamHI-HF.

Plasmid 84471:
pAAV-RAM-d2TTA::TRE-ChR2-WPREpA



DNA digested with HindIII-HF single digest and HindIII-HF/ BamHI-HF double digest for **2 hours**.

Gel: 0.8% agarose stained with 6 uL of ethidium bromide.

Ran for 1.5 hours at 100 volts.