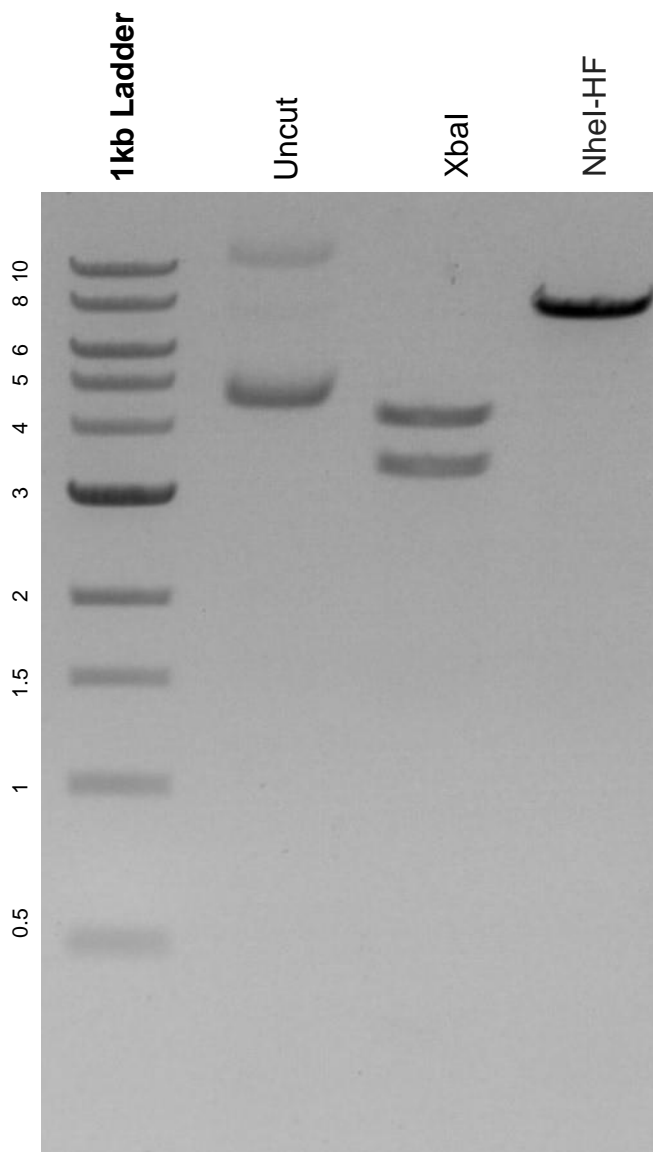


This gel depicts the NEB 1kb ladder and a digestion of the plasmid pMRX-IP-GFP-LC3-RFP with the following enzymes: XbaI and NheI-HF.

Plasmid 84573:
pMRX-IP-GFP-LC3-RFP



DNA digested with XbaI and NheI-HF single digests for **2 hours**.
Gel: 0.8% agarose stained with 5 uL of ethidium bromide.
Ran for 1.5 hours at 100 volts.