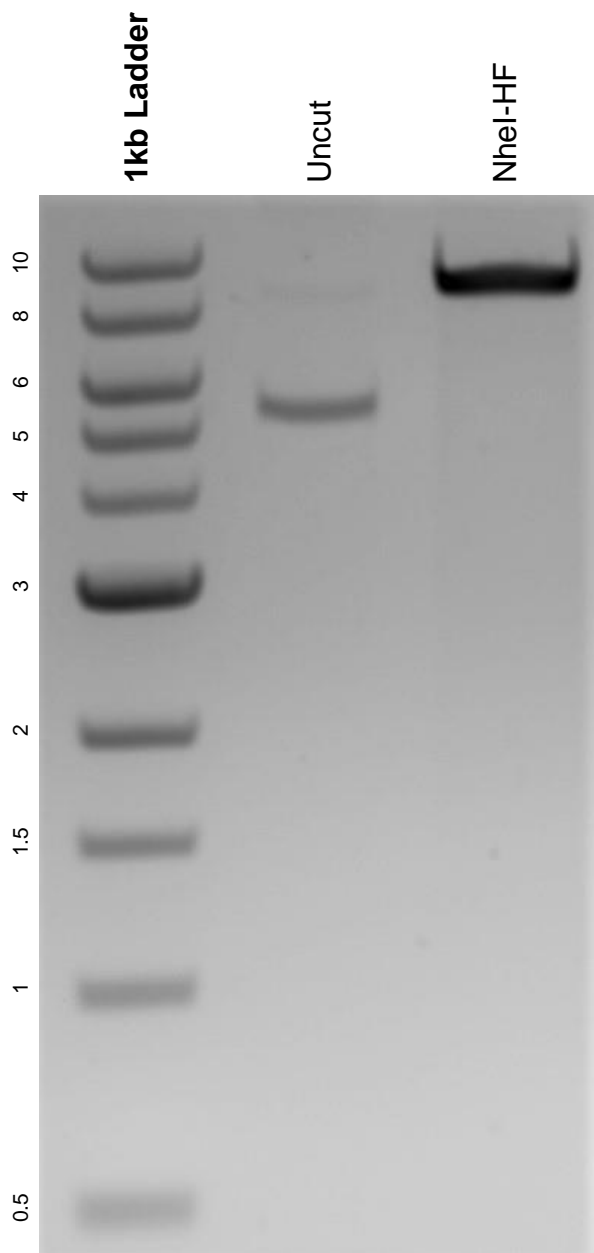


This gel depicts the NEB 1kb ladder and a digestion of the plasmid pHR_AXP_hrGFP with the following enzymes: NheI-HF.

Plasmid 84613:
pHR_AXP_hrGFP



DNA digested with NheI-HF single digest for **2 hours**.
Gel: 0.8% agarose stained with 6 uL of ethidium bromide.
Ran for 1.5 hours at 100 volts.