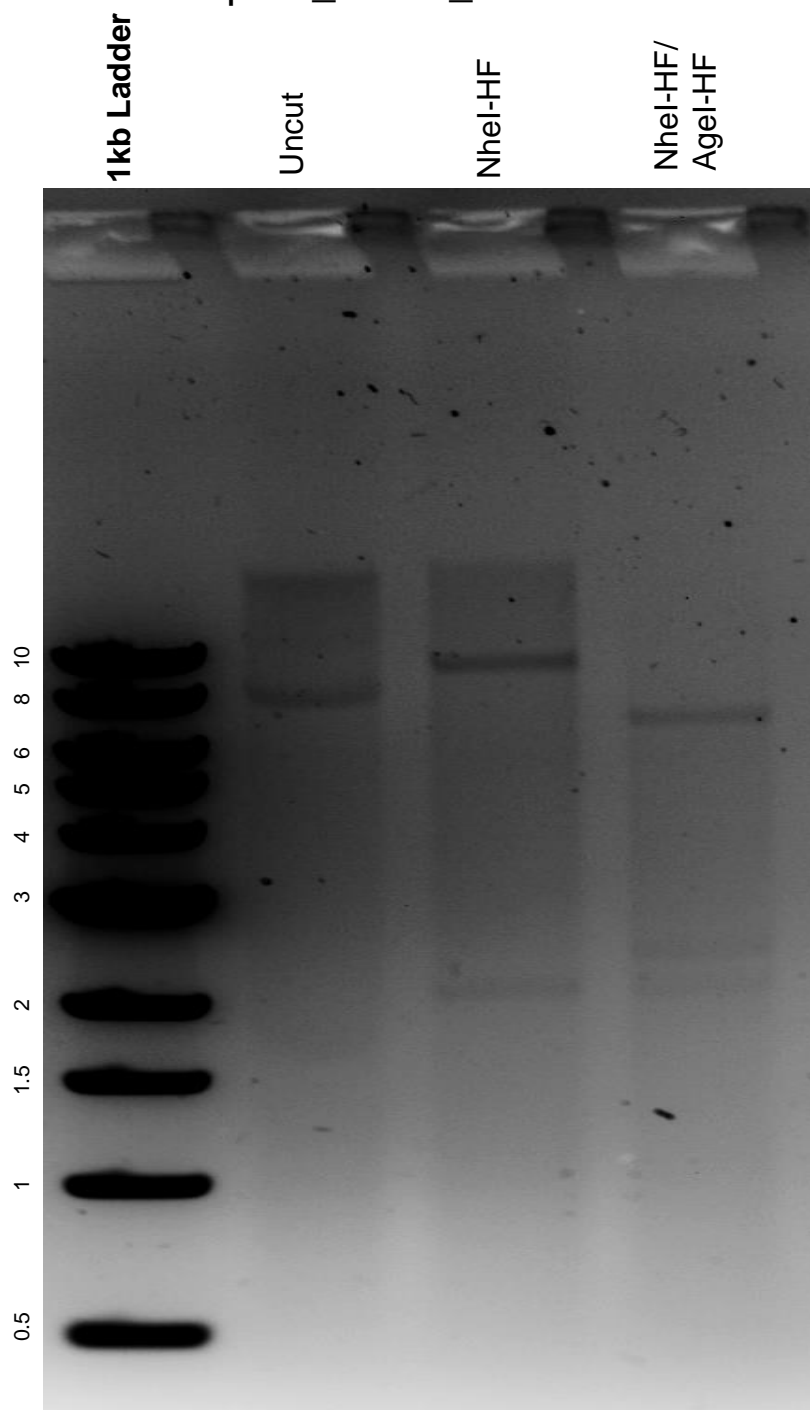


This gel depicts the NEB 1kb ladder and a digestion of the plasmid pHR_MFE1_hrGFP with the following enzymes: NheI-HF and AgeI-HF.

Plasmid 84617:
pHR_MFE1_hrGFP



DNA digested with NheI-HF single digest and NheI-HF/AgeI-HF double digest for **2 hours**.

Gel: 0.8% agarose stained with 5 uL of ethidium bromide.

Ran for 1.5 hours at 100 volts.