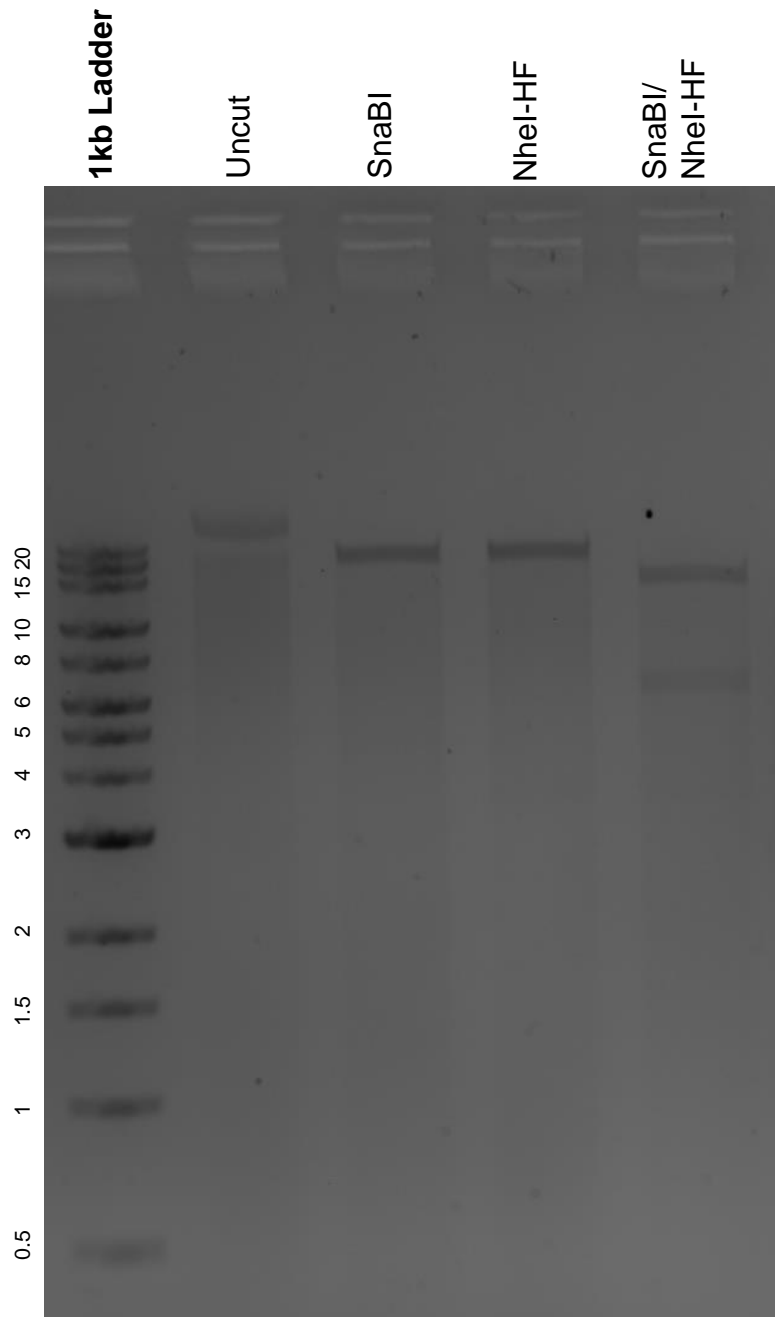


This gel depicts the NEB 1kb extend ladder and a digestion of the plasmid pGem-nHyPer:sAPX with the following enzymes: SnaBI and NheI-HF.

Plasmid 84735:
pGem-nHyPer:sAPX



DNA digested with SnaBI and NheI-HF single digests and SnaBI/NheI-HF double digest for **2 hours**.

Gel: 0.8% agarose stained with 5 uL of ethidium bromide.

Ran for 1.5 hours at 100 volts.