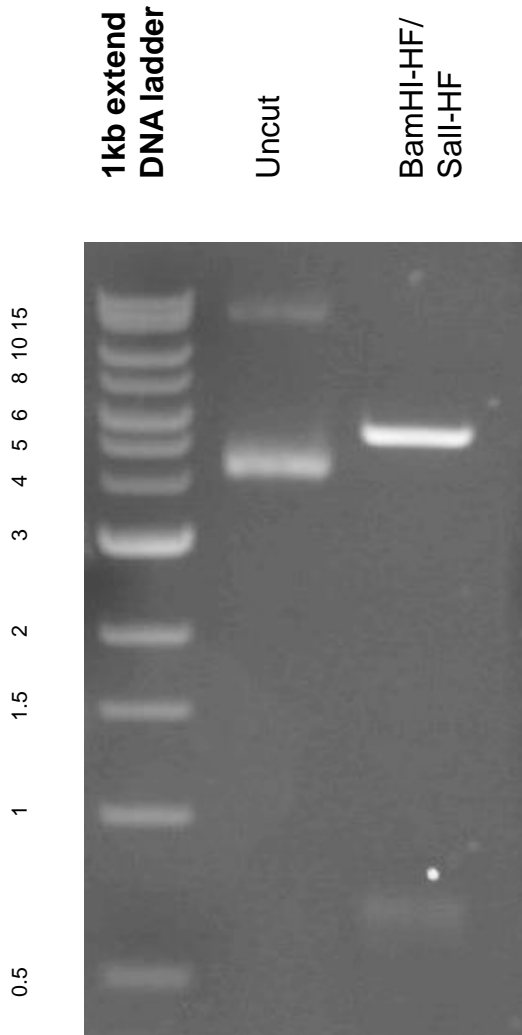


This gel depicts the NEB 1kb extend DNA ladder and a digestion of plasmid 84908 with BamHI-HF/Sall-HF.

**Plasmid #84908:  
pAG303-Gal-GR100**



DNA digested with BamHI-HF/Sall-HF double digest for **4 hours**. Gel: 0.8% agarose stained with ethidium bromide. Run for 75 min at 100 volts.