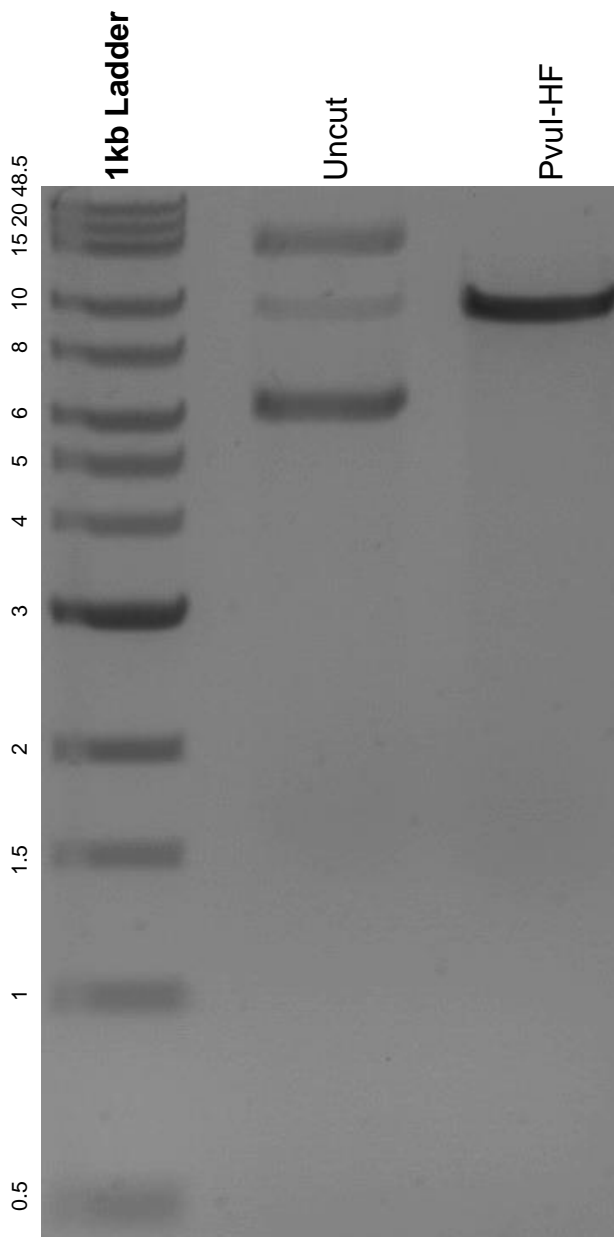


This gel depicts the NEB 1kb extend ladder and a digestion of the plasmid pK037.CAG-FRT-stop-FRT-RFP-ires-tTA-WPRE (Supernova) with the following enzyme: PvuI-HF.

Plasmid 85038:

pK037.CAG-FRT-stop-FRT-RFP-ires-tTA-WPRE (Supernova)



DNA digested with a PvuI-HF single digest for **2 hours**.
Gel: 0.8% agarose stained with 5 uL of ethidium bromide.
Ran for 1.5 hours at 100 volts.