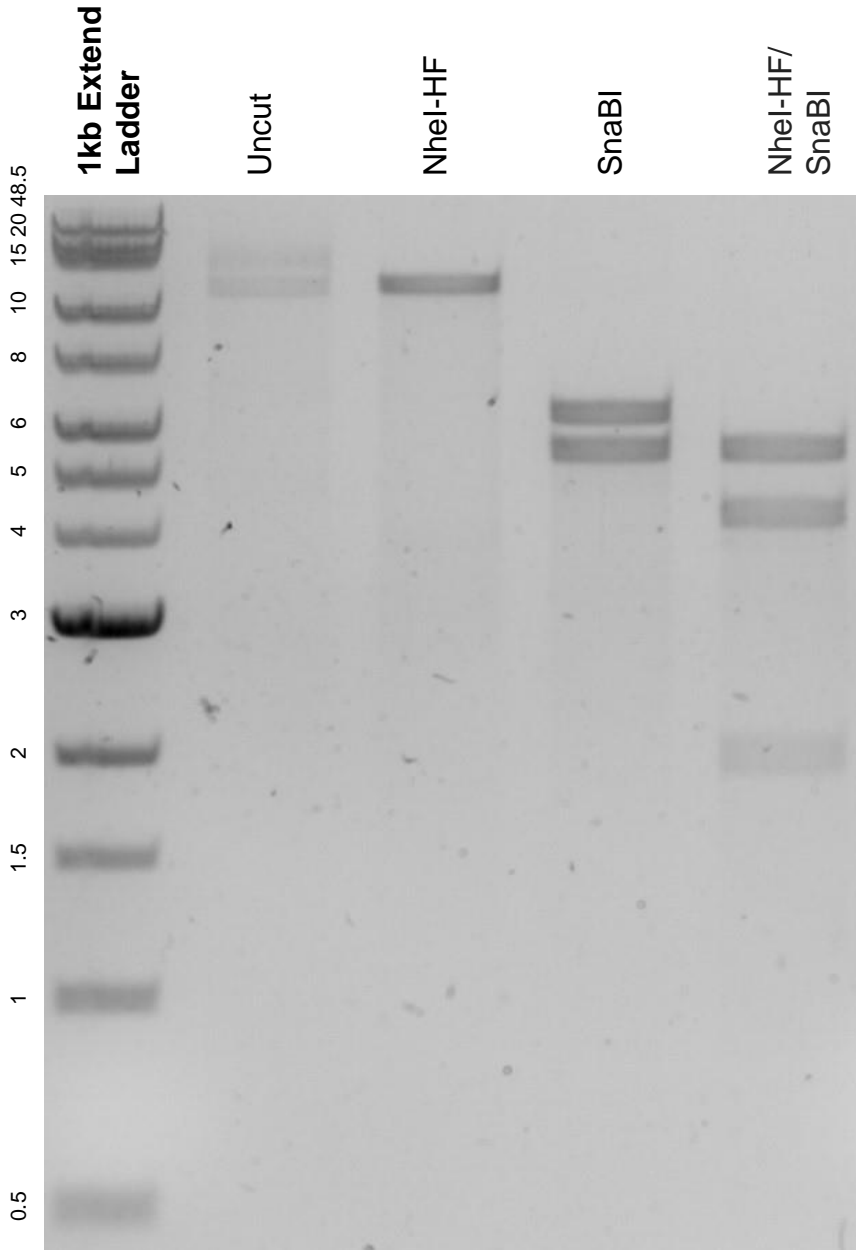


This gel depicts the NEB 1kb extend ladder and a digestion of the plasmid pAAVS1-Neo-CAG-M2rtTA-H2BGFP (donor AB) with the following enzyme(s): NheI-HF and SnaBI.

Plasmid 85798:
pAAVS1-Neo-CAG-M2rtTA-H2BGFP (donor AB)



DNA digested with NheI-HF and SnaBI single digests and an NheI-HF/SnaBI double digest for **2 hours**.

Gel: 0.8% agarose stained with 5 uL of SYBR Safe.

Ran for 1.5 hours at 100 volts.