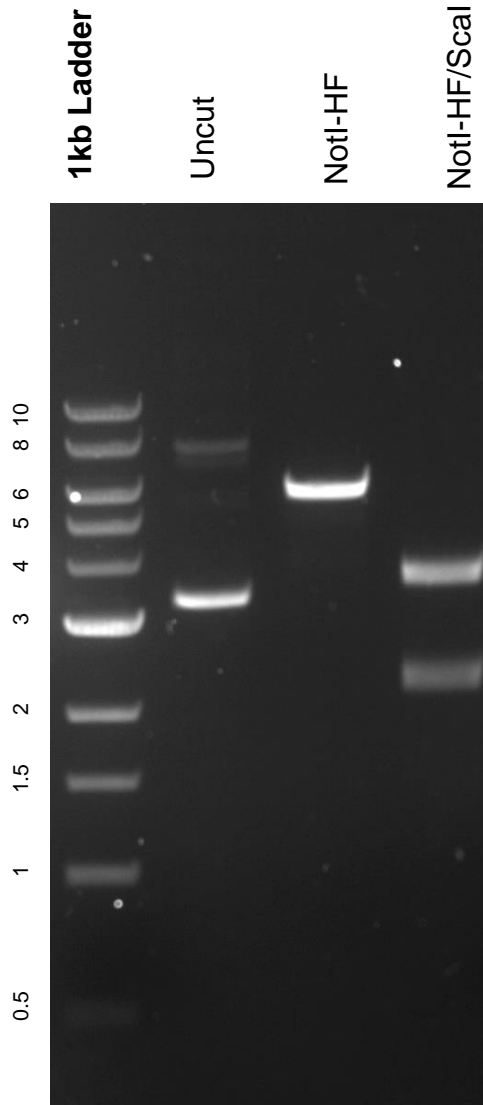


This gel depicts the NEB 1kb ladder and a digestion of the plasmid pCMV4-ApoE2 with the following enzymes: NotI-HF, NotI-HF, and Scal-HF

Plasmid: 87085
pCMV4-ApoE2



DNA digested with NoTI-HF single digest and NotI-HF and Scal-HF double digests for **2 hours**.
Gel: 0.8% agarose stained with 5 uL of ethidium bromide.
Ran for 1.5 hours at 100 volts.