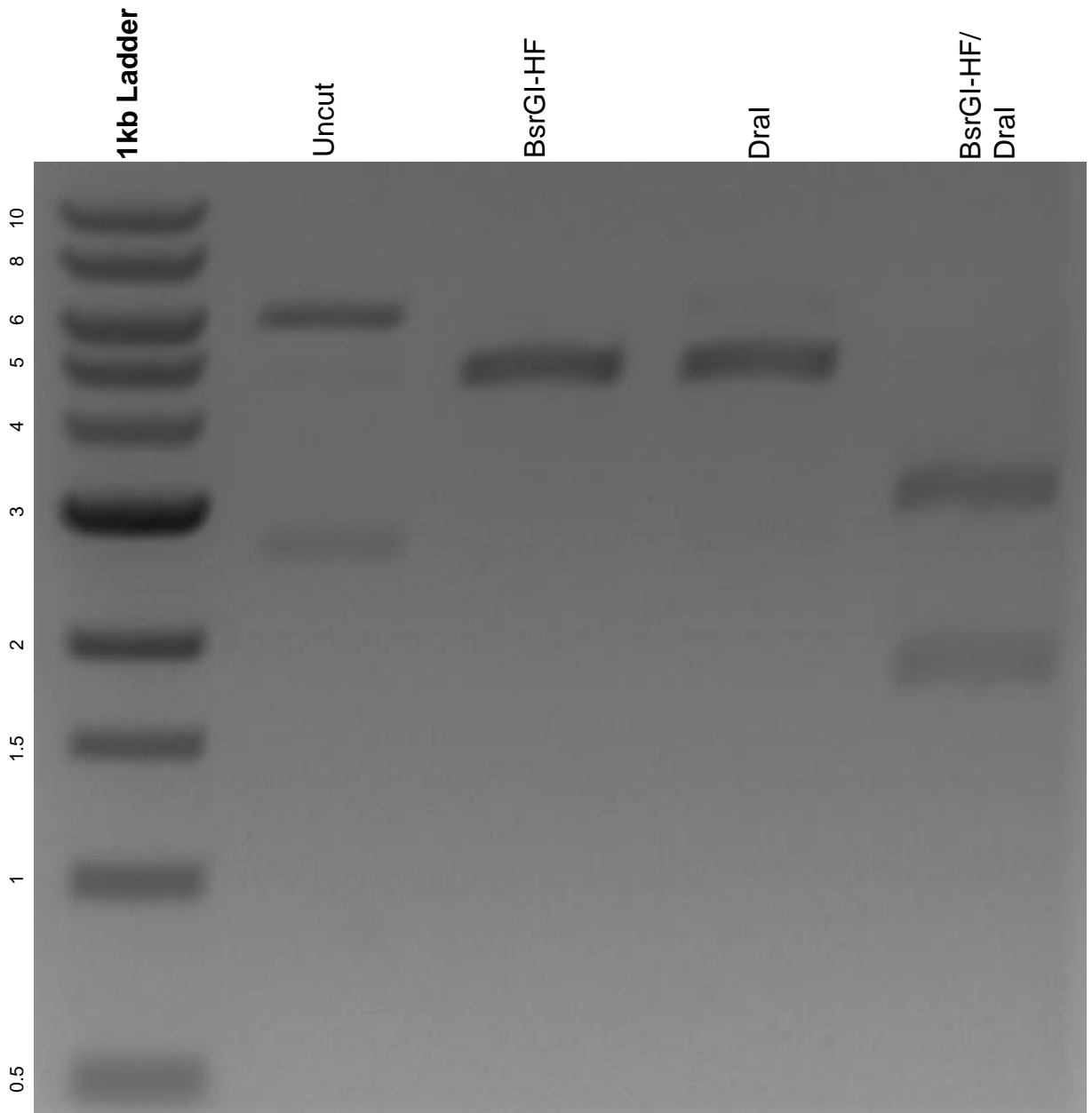


This gel depicts the NEB 1kb ladder and a digestion of the plasmid pTubb3-MC with the following enzymes: BsrGI-HF and Dral.

**Plasmid 87112:  
pTubb3-MC**



DNA digested with BsrGI-HF and Dral single digests and BsrGI-HF/ Dral double digest for **2 hours**.

Gel: 0.8% agarose stained with 6 uL of ethidium bromide.

Ran for 1.5 hours at 100 volts.