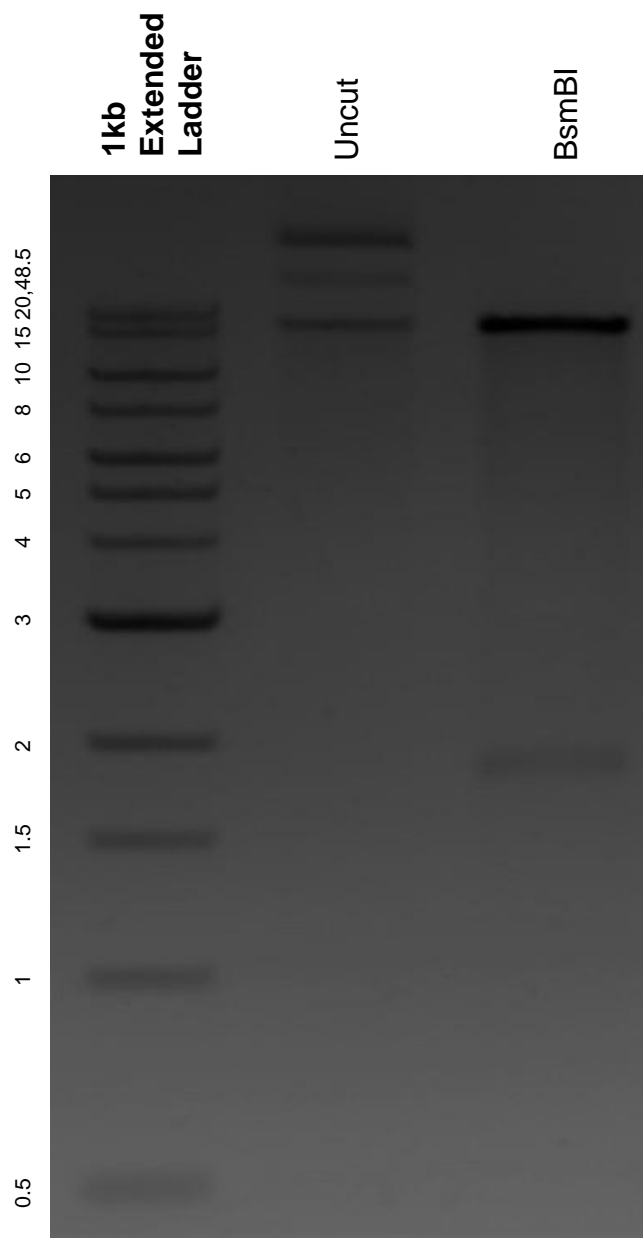


This gel depicts the NEB 1kb extended ladder and a digestion of the plasmid TLCV2 with the following enzymes: BsmBI.

**Plasmid 87360:**  
**TLCV2**



DNA digested with BsmBI single digest for **2 hours**.  
Gel: 0.8% agarose stained with 6 uL of ethidium bromide.  
Ran for 1.5 hours at 100 volts.