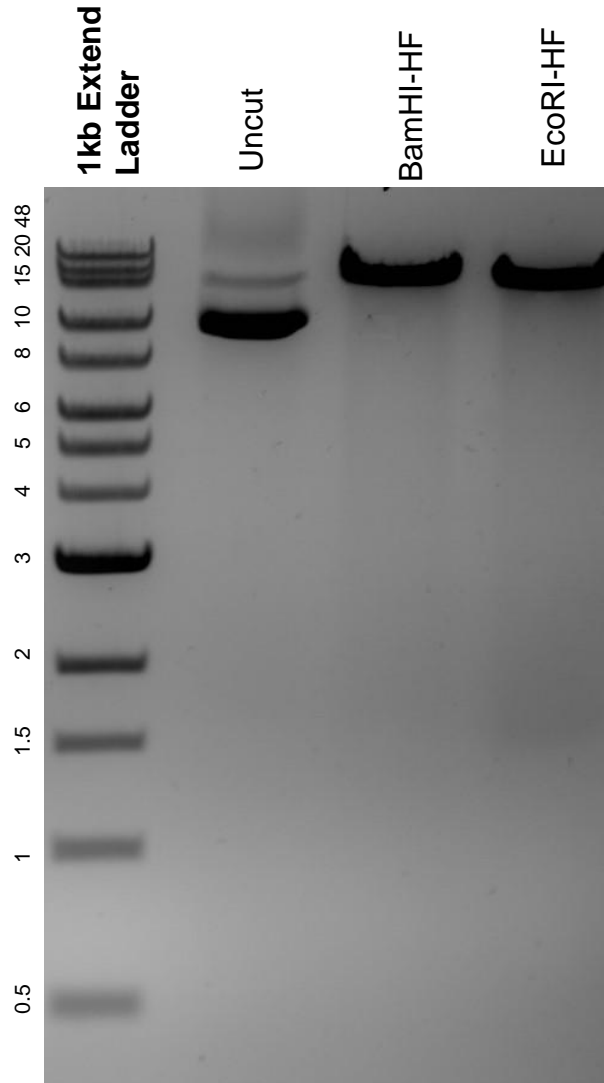


This gel depicts the NEB 1kb Extend Ladder and a digestion of the plasmid TLCV2 with the following enzymes: BamHI-HF and EcoRI-HF

Plasmid 87360
TLCV2



DNA digested with BamHI-HF and EcoRI-HF single digests for **2 hours**.
Gel: 0.8% agarose stained with 5 uL of ethidium bromide.
Ran for 1.5 hours at 100 volts.