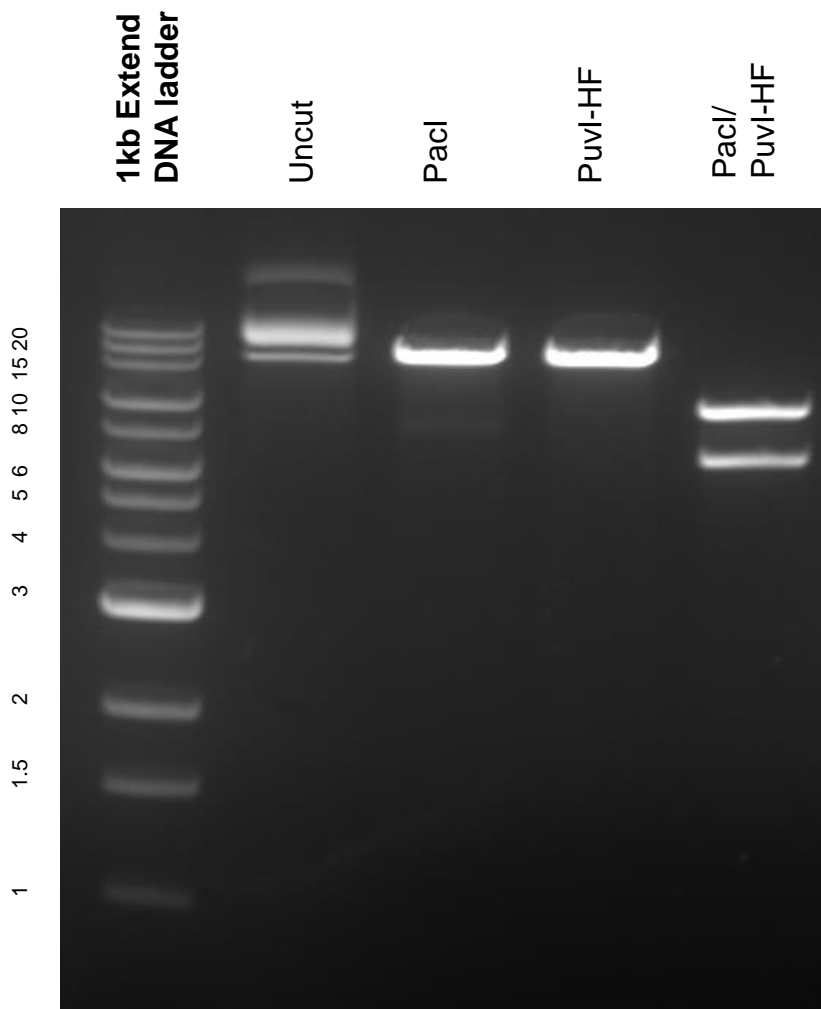


This gel depicts the NEB 1kb extend DNA ladder and a digestion of plasmid 87843 with PacI, PvuI-HF and PacI/PvuI-HF.

Plasmid 87843: pFC331



DNA digested with PacI, PvuI-HF and PacI/PvuI-HF for 3 hours.

Gel: 1% agarose stained with ethidium bromide. Run for 100 minutes at 100 volts.