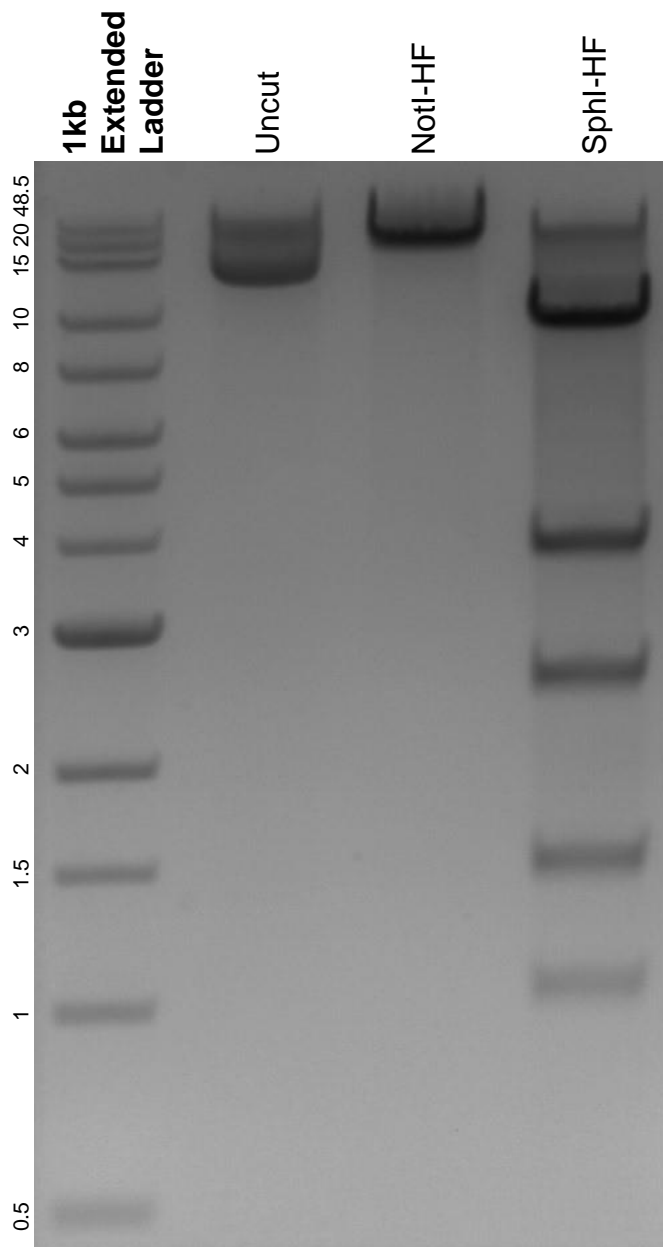


This gel depicts the NEB 1kb extended ladder and a digestion of the plasmid p37-2iDMD-LR with the following enzymes: NotI-HF and SphI-HF.

Plasmid 88892:
p37-2iDMD-LR



DNA digested with NotI-HF and SphI-HF single digests for **2 hours**.
Gel: 0.8% agarose stained with 6 uL of ethidium bromide.
Ran for 1.5 hours at 100 volts.