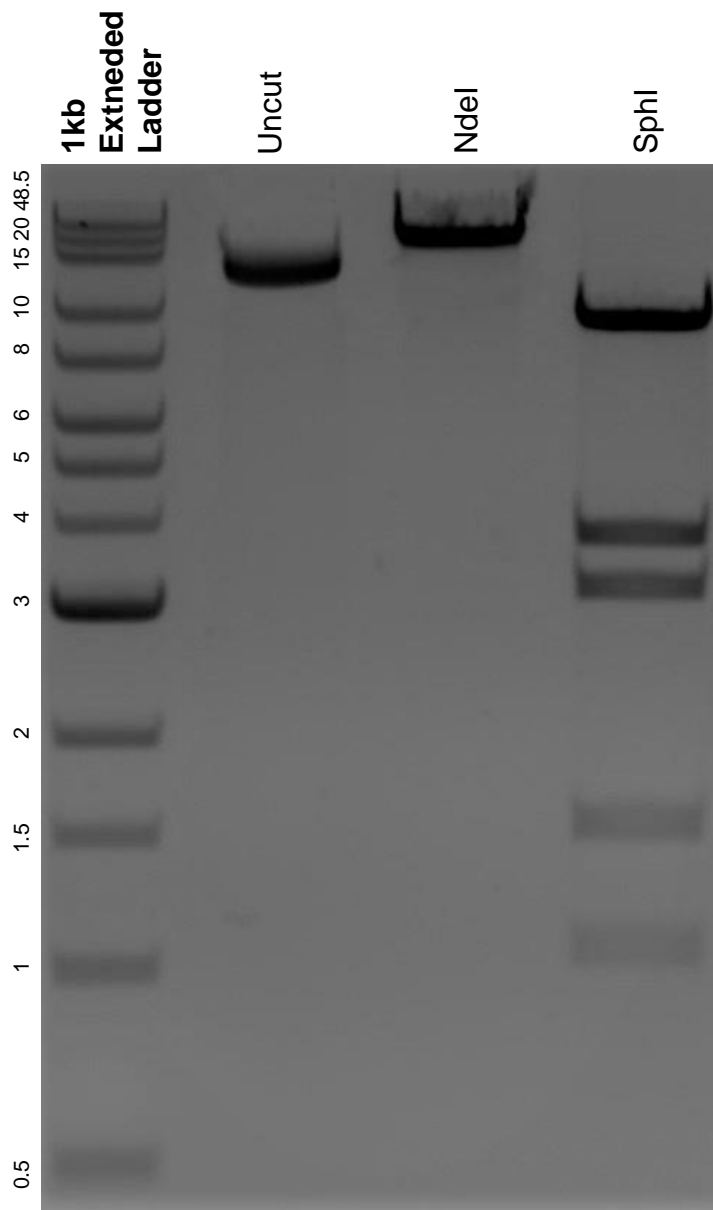


This gel depicts the NEB 1kb extended ladder and a digestion of the plasmid p28-2iDMD-puro with the following enzymes: NdeI and SphI.

Plasmid 88895:
p28-2iDMD-puro



DNA digested with NdeI and SphI single digests for **2 hours**.
Gel: 0.8% agarose stained with 6 uL of ethidium bromide.
Ran for 1.5 hours at 100 volts.